

Forestry TECHNOLOGY

Product Overview



2022











"KOTSCHENREUTHER has established itself as a brand name for high-technology, high-quality and practice-oriented products for forestry."

EUGEN KOTSCHENREUTHER



FOREWORD

INDEX

	FOREWORD	2			
	COMPANY HISTORY	4			
	TIMELINE	6			
	KOTSCHENREUTHER FORESTRY SPECIALIST TRACTOR	8			
	K-SERIES WITH A MEDIUM-SIZED FRAME	14			
	K-SERIES WITH LARGE FRAME	16			
	K-SERIES WITH EXTRA-LARGE FRAME	18			
	PERFORMANCE AND EFFICIENCY	20			
	TECHNICAL DATA SPECIALIZED FORESTRY TRACTOR	70			
	8-WHEEL	72			
	Two machines in one	76			
	Technical data trailer	79			
	From the 8X8 to the specialized forestry tractor	81			
	MULTITALENT	84			
	QUICK CHANGE SYSTEM	88			
	DETAILS MULTITALENT	90			
	UVV / ROPE TOW	92			
	UVV FORESTRY TRACTOR M-SERIES	96			
	UVV FORESTRY TRACTOR R-SERIES	98			
	REAR HYDRAULICS	104			
	PROTECTIVE GEAR	106			
	TECHNICAL DATA	112			
	JOHN DEERE TRACTORS WITH CRANE	114			
	CRANE BODY SERIES 6	118			
	CRANE BODY SERIES 7/8	120			
	JD 6R FORWARDING TRACTOR	122			
	REVERSING DEVICE	124			
	RÜFA 6M	128			
	RUFA 6R	130			
	RÜFA 7R & 8R	132			
	ATTACHMENTS	134			
	Front/rear attachments	136			
	Quick change system	138			
	Kinematics	139			
	Processor heads/crane attachments	140			
	SERVICE OFFER	142			
	Services	144			
	Remote support	145			
	PowerGard contracts	146			



1959

Our experience goes back 63 years. This is undoubtedly a major competitive advantage that we bring profitably into our product portfolio and our services.

The Kotschenreuther company has been existing for over 63 years. Innovations and reliability always have priority. We manufacture, sell, service and repair a wide range of John Deere machines, such as lawnmowers, tractors, combine harvesters, forage harvesters, presses, AMS solutions and forest tractors. Among other things, we convert them into special machines with our professional forestry attachments. Equally well known on the market is our Kotschenreuther special forestry tractor, which impresses with its versatile, fast and cost-effective use. We sell products from well-known manufacturers at our seven locations plus at two partner dealers in Germany and employ a total

of 215 people. These include specialists such as electrical engineers, hydraulic engineers, IHK-certified service technicians for tractors, foremen, mechanics and other specialists for assembly and repairs. In addition to a full range of forest machines, agricultural machines and small devices, we offer a wide range of services that leave nothing to be desired. Kotschenreuther's customers expect the highest level of quality. The long success story is primarily based on the commitment to meet these expectations. As a result, loyal partnerships with customers have been built up over many years, with a successful result for everyone. Our guiding principle represents this: We will not put our name on a product that does not contain the best of what we can give.

HISTORY & company philosophy

Quality

Kotschenreuther sees the importance of having a constant dialogue with the customer. When implementing our products, we always set high demands and standards in terms of design, material, production and assembly. Quality in production is the top priority at Kotschenreuther. Each assembly team made up of different specialists is personally responsible for the quality of your machine. The extensive final inspection by a highly qualified employee and the production manager ensures additional safety. This creates our quality - thoroughgoing quality for the benefit of our customers.

All from a single source

Kotschenreuther offers an extensive supply of spare parts, not only for self-manufactured products. Other parts from well-known manufacturers in agriculture and forestry are always available from stock at short notice and complete our parts supply for you. In order to meet the demands of our customers, Kotschenreuther attaches great importance to quality in all areas. This applies to the entire product as well as to the associated spare and wear parts as well as to our extensive range of services.

Your competent partner for modern technology

Consulting and customer care have a high priority at Kotschenreuther. Our experienced employees ensure that individual consulting and a tailor-made offer are prepared for each customer. If you are looking for excellent forestry and agricultural technology at fair conditions and would like to be looked after perfectly, you have come to the right place at Kotschenreuther. We consult you competently and professionally before you make your purchase decision, because we want you to be satisfied with us in the long term. A sales representative will be happy to visit you on site at your company and determine the best machine for you, considering your existing machinery and the specific areas of application. As a long-standing partner of our main brand, John Deere, you will always find an attractive range for all areas of agricultural and forestry technology, as well as an extensive exhibition of used machines.



6 **TIMELINE**
OF OUR BODY VARIANTS



First **John Deere 3040**
with KOTSCHENREUTHER
forest body

1979

1986

John Deere 2850
with double drum winch
and front bolster swing arm



1989

John Deere 2850
with rear crane and
front bolster swing arm



1994

John Deere 6506
with skid steer, winch and
protective equipment



1996



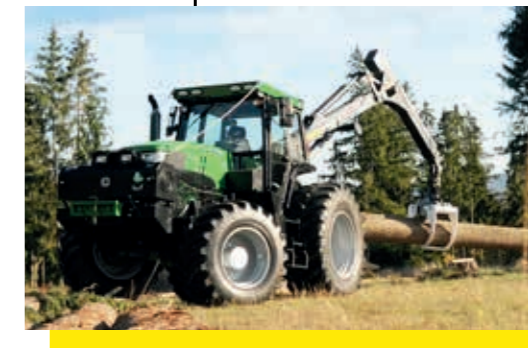
KOTSCHENREUTHER
Logger **K110**

2007



KOTSCHENREUTHER
Logger **K175**

2012



K 175 R-Series

2020

KOTSCHENREUTHER
K 175 Gen.2



HONESTY, TRUST, LISTENING
— Our core values at KOTSCHENREUTHER —





FORESTRY SPECIALIST TRACTOR OF THE R-SERIES

With the new series, we not only have developed in terms of performance and efficiency, but we also set new standards regarding comfort and ergonomics with the new KOTSCHEUREUTHER forest cabin. With the new operating concept, the driver can control and steer the machine even more precisely and easier.

Thanks to our long-established design concept, our machine is adequate to any task.

- High performance
- Extremely long service life
- Tailor-made equipment to individual specifications
- Compact design
- Robust chassis
- Sensitive, simple handling
- High manoeuvrability
- Fast turnaround
- Clear control functions
- Economical work
- High resale value



GO SMART, DO MORE

With the KOTSCHENREUTHER Gen.2 special forestry tractor, which is standing out for versatility, lightness, and best performance, you secure yourself a well-engineered power machine that guarantees a wide range of possible uses for all challenges in the most difficult terrain and operating conditions.



NEW AND SMARTER

When you improve the best even more, great things can happen. Based on their legendary traction, reliability and comfort, we've added some new and even smarter models to the R-Series Gen.2.



A SOLUTION FOR EVERY STANDARD

Whether you are contractor, an agricultural, forestry or municipal company - one of our KOTSCHENREUTHER special forestry tractors will be just right for you.

1 | 1-CLICK-GO-AUTOSETUP

Up to 50% shorter activation times when switching on: The planned work appears automatically on the display – the details are confirmed with one click and work can begin.

2 | HIGH STABILITY

Our forestry tractors are designed with an undivided bridge steel frame and therefore ideal for use in the forest.

3 | ALWAYS STATE-OF-THE-ART

Our remote maintenance facilitates direct and uncomplicated support for the driver. Our wireless software upgrades keep your tractor up to date.

4 | LOW OPERATING COSTS

Low fuel consumption, low maintenance and repair costs and a very high resale value guarantee the best price-performance ratio.

5 | ENGINE PERFORMANCE

The 6.8 l engines from John Deere with up to 301 hp impress with their striking performance and low operating costs.

6 | TRANSMISSION

Particularly comfortable Auto-Quad™ Plus or the extremely efficient stepless AutoPowr™. Each available as a 40 or 50 km/h version.

7 | SMARTER HYDRAULICS

Power management for up to 40 additional hp in hydraulic applications for maximum productivity.

8 | OUTSTANDING CABIN

The particularly spacious and with 66 dB(A) very low-noise and low-vibration 0.24 m/s² cabin guarantees an ideal start to everyday work. (Test report K240R Gen.2)

9 | STEERING

The user interface on the display and the ergonomically arranged armrests/joysticks allow you to comfortably concentrate on your work.

10 | COMFORT

The front axle suspension (TLST™ Plus) and the hydraulic front axle stabilization (STABI) ensure an optimal driving experience.

11 | AXLES AND TIRES

Large front and rear tires for maximum traction and footprint. The larger footprint reduces soil compaction, saves fuel and leads to more traction.

Also check out our YouTube channel!

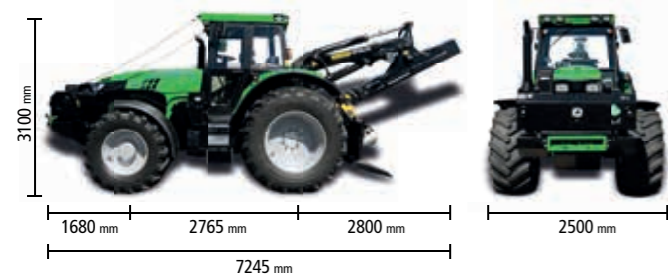


MODEL OVERVIEW

FORESTRY SPECIAL MACHINES

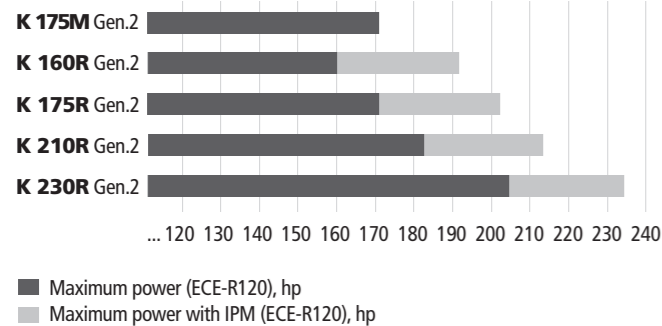


MEDIUM FRAME
ULTIMATE VERSATILITY AND PERFORMANCE

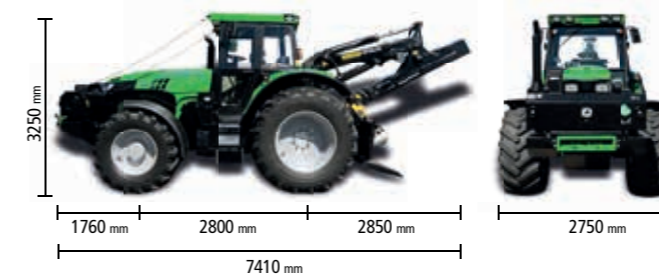


* With 500/65R28 front tires and 600/65R38 rear tires. Epsilon Crane M90R68

ENGINE PERFORMANCE

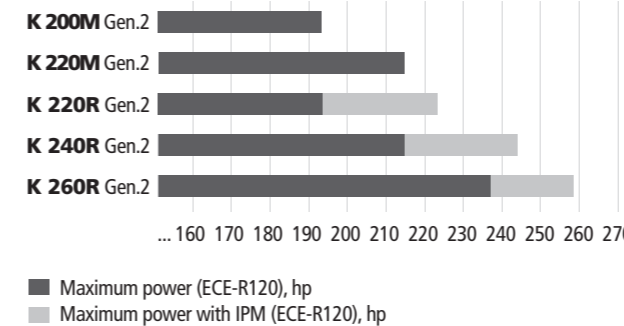


LARGE FRAME
FULL POWER — AT ANY TIME

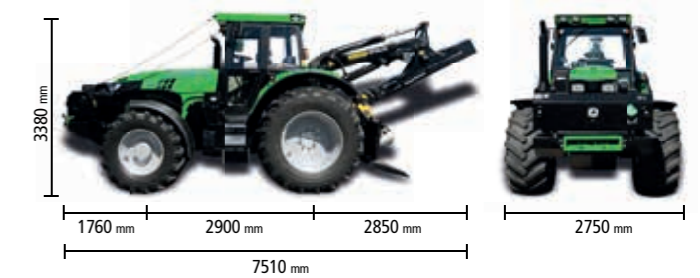


* With 600/65R28 front tires and 710/70R38 rear tires. Epsilon Crane S110 R68

ENGINE PERFORMANCE

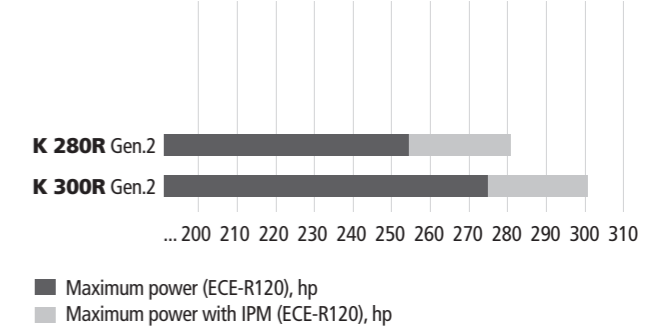


EXTRA-LARGE FRAME
FOR EXTRA POWERFUL PERFORMANCE



* With 600/70R30 front tires and 710/70R42 rear tires. Epsilon Crane S120 R68

ENGINE PERFORMANCE



14 **FORESTRY SPECIALIST TRACTOR**
WITH MEDIUM FRAME



OUTSTANDING PERFORMANCE

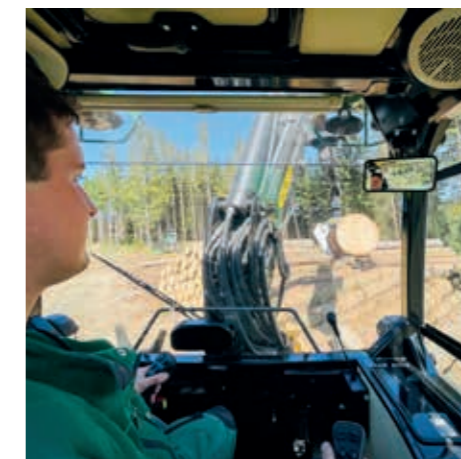
With this long-established special forestry tractor, you are well prepared for all tasks. Due to its compact design and stable construction, this series is suitable for everything from moving wood to maintenance work.



360° swivel seat for best ergonomics

WELL-CONCEIVED IN DETAIL

As a forestry tractor in the medium-sized series, it combines the advantages of a compact, manoeuvrable, and light forestry tractor. A combination that convinces.



Brilliant overview



Flexible, fast and manoeuvrable

ENGINES

Types:	Cylinder:	Performance:	Wheelbase:	Hydraulics:	
				SERIES	(optional*)
175M	6-cylinder	126 KW / 172 HP	2765 mm	114 l/min	213 l/min
160R	6-cylinder	141 KW / 192 HP	2765 mm	155 l/min	244 l/min
175R	6-cylinder	149 KW / 203 HP	2765 mm	155 l/min	244 l/min
210R	6-cylinder	156 KW / 213 HP	2765 mm	155 l/min	244 l/min
230R	6-cylinder	172 KW / 234 HP	2765 mm	155 l/min	244 l/min

*Two circuit hydraulic system



16 FORESTRY SPECIALIST TRACTOR WITH LARGE FRAME



FUEL CONSUMPTION

With only 7.5 l/h, the K260R Gen.2 achieved very good fuel consumption in average work use in the 2021 KWF test.



READY TO LIFT/PULL EVERYTHING...

... no matter what and how much of it. The large range of our forestry specialist tractors is available with a big selection of winch and crane options to combine their impressive pulling/lifting power in numerous applications.



VERSATILITY ON HIGHEST LEVEL

In particular our large series is ideal for a wide range of uses (e.g., mulching work, maintenance work, transport work and the harvesting of long and short timber) and is therefore the perfect machine for forestry companies and contractors as well as municipal companies.



ENGINES

Types:	Cylinder:	Performance:	Wheelbase:	Hydraulics:	
				SERIES	(optional*)
200M	6-cylinder	143 KW / 194 HP	2800 mm	155 l/min	244 l/min
220M	6-cylinder	159 KW / 216 HP	2800 mm	155 l/min	244 l/min
220R	6-cylinder	164 KW / 223 HP	2800 mm	155 l/min	244 l/min
240R	6-cylinder	179 KW / 244 HP	2800 mm	155 l/min	244 l/min
260R	6-cylinder	190 KW / 259 HP	2800 mm	155 l/min	244 l/min

*Two circuit hydraulic system

*Fancy some action?
Here's the tractor in action*



18 **FORESTRY SPECIALIST TRACTOR**
WITH EXTRA LARGE FRAME



ENGINES

Types:	Cylinder:	Performance:	Wheelbase:	Hydraulics:	
				SERIES	(optional*)
280R	6-cylinder	206 KW / 281 HP	2900 mm	160 l/min	285 l/min
300R	6-cylinder	221 KW / 301 HP	2900 mm	160 l/min	285 l/min

*Two circuit hydraulic system



GRIP ON EVERY TERRAIN

With a tire size of up to 710/70R42 (2061mm diameter) at the rear and 600/70R30 (1602mm diameter) at the front, the extra-large series pushes the limits of traction, footprint and driving comfort.

UNLIMITED PERFORMANCE

The PTO shaft of the extra-large series is specially designed for flexible and versatile use of attachments in this performance class. As a contractor, you can therefore complete all the work that needs to be done with just one machine.

The two top models have large power reserves. High torques can be called up at the PTO shaft. These tractors are particularly ideal for all tasks that require engine power.



Unlimited power at the rear PTO



THE QUALITY YOU DEMAND!

Quality is an integral part of our corporate culture. Our declared goal has always been to build machines that not only meet your expectations through unbeatable quality and unsurpassed versatility but exceed them.



1 | TESTED SAFETY CABIN

The cabin meets the requirements of the ROPS, FOPS, OPS and OECD Code 4 tests (test weight of 16,000 kg) by the DLG test centre and is a low-noise workplace at 66 dB(A).



2 | PANORAMIC REAR WINDOW

The new cabin shape gives us a comfortable view of all attachments at the rear, as well as of the upper field of vision when working with the crane.



3 | LED LIGHTING PACKAGE

The light performance has been significantly increased compared to the previous model. The work lights, which are integrated into the cabin roof, offer you real 360° illumination with high-contrast daylight quality.



4 | EASY SERVICE ACCESS

Easily accessible service steps on the left and right of the cabin as well as a large number of grab handles on the machine.



5 | STORAGE OIL EMERGENCY KIT

Quickly accessible storage space for the oil emergency kit so that you are always well prepared in an emergency.



6 | SAFE ASCENT

Dirt-resistant, wide steps for safe access to the KOTSCHENREUTHER cabin. The standard chainsaw holder offers you ergonomic access to your work tool.



7 | TOOLBOX

Easy access to daily maintenance tools and other maintenance supplies for reliable and safe machine maintenance.



8 | PROTECTION DEVICES

The forestry tractor is perfectly protected against branches all around. All moving components on the spring-loaded front axle and the cabin mounting are also fitted with solid protective rubber to protect against leaves and dirt.



9 | UNDERBODY PROTECTION

The backbone of the tractor is the continuous bridge steel frame. The underbody protection is integrated into this concept, which means that the drive train, vehicle electrics and on-board hydraulics are also optimally protected.



10 | ASSISTANCE

The handrail to the left and right of the ladder allows you to comfortably and safely access your command centre.



14 | LARGE STORAGE BOX

The splash-proof and lockable storage box allows you to safely stow away your accessories for daily work.



15 | TREE PUSHER

To assist with felling work, we optionally offer a pluggable tree pusher that can be stowed on the machine.



16 | OPTIONAL STORAGE BOX

Our storage boxes offer a multitude of individual possibilities.



11 | THOUGHT OF EVERYTHING

Various storage options to safely transport your work equipment, e.g. canister holder, chainsaw holder and much more.



12 | FRESH AIR & ACOUSTICS

A hinged side window on the right, sliding window on the left and the roof hatch that can be opened guarantee you an optimal supply of fresh air as well as optimal communication with the outside area.



13 | ROTATING LOG HOLDER

The V-shaped and jagged log holder enables you to transport logs quickly and safely, even without a safety rope.



RELIABLE

- through thick and thin.

We have earned an excellent reputation as a manufacturer of high-quality special forestry tractors. Throughout the industry, the name KOTSCHENREUTHER stands for reliability. Through mercilessly tough tests, we ensure that our tractors offer you the reliability that you rightly demand from a KOTSCHENREUTHER. During development, all aspects of our new special forestry tractors are put through their paces for years: They are exposed to extreme conditions on the inclination test stand and in the mud tank and subjected to all conceivable application situations.

This gives you the certainty that your new KOTSCHENREUTHER special forestry tractor will prove itself optimally for many years, even under the toughest operating conditions.



Evaluation by customer focus groups

Long before the new product hits the market, we invite practitioners to take part in focus groups to critically examine our prototypes. In this way, we place the needs and requirements of foresters at the centre of our work.



KOTSCHENREUTHER Quality Assurance and Production System

The continuous development of our machines and solutions is an ambitious goal. To do this, we have introduced a system to act quickly, increase effectiveness and maximize our efficiency. By implementing basic principles, proven methods and common tools and processes, we can systematically and profitably optimize our high quality throughout the company.



Our employees have made it their task to subject our machines to all conceivable tests. This is how we ensure that we offer our customers what they expect: reliable special forestry tractors, that withstand the toughest workloads and weather conditions.

In short: we leave nothing to chance.





FOR YOUR BEST PERFORMANCE

You sit down, look around and you know immediately: I can perform here! Better, faster and more efficient. With a low noise level of 66 dB(A), you can enjoy the large, spacious cabin on every journey.

1 | INVISIBLE DOORS

Our panorama doors get by with little. And that is your advantage. This gives you an absolutely clear view on both sides.



2 | BLUETOOTH RADIO

Provides a Bluetooth hands-free phone connection.



3 | BETTER SEAT COMFORT

Wide range of premium driver seats for less fatigue and more productivity. The Ultimate seat with active climate control is available as an option.



4 | SUFFICIENT STORAGE FOR ONE CLEAN CABIN

With our storage box you have easy access to everything what you need along the way.



5 | EMERGENCY SEAT

The foldable and pluggable emergency seat can be used in a variety of ways, for example as a snack table, desk pad or as a seat in the break.



6 | HEAT COOL COMBINATION

The combined cooling and heating compartment enables you to bring or keep your drinks or food at the required temperature.



7 | A MOUNT FOR RADIO TRANSMITTER

Easily accessible mount for the Radio transmitter at the cabin exit and nets for gloves and much more.



8 | LUGGAGE NET

A variety of luggage nets and bungee cords to store your maps and wood lists.



9 | AIR DISTRIBUTION/ AIR CONDITIONING

To keep the cabin cooler on hot days and the windows fog-free on cold days, we've improved the air-flow in the cabin. Nozzles on the rear window, windscreen above, cockpit, leg area and footwell.



10 | FIRST AID KIT

Always ready to hand for emergencies with illuminated storage compartment for the first aid kit.



Also check out our YouTube channel!



11 | FOLDABLE ARMRESTS

Two storage compartments under the folding armrest, including a USB port, provide space for small writing pads and for charging batteries.



12 | CUP HOLDER

Two bottle holders on the right side in the front and rear of the cabin. The bottle holder in the front area is tempered with the cabin's internal air supply.



13 | STORAGE SPACE FOR DRINKS INCL. COOLING/HEATING

Cup holder for up to 4 drinks. The drinks are cooled by the air conditioning in the summer and heated by the tractor heater in the winter.



14 | STORAGE COMPARTMENT "AP"

With the AutoPowr continuously variable transmission, the control panel has a small storage compartment under the armrest.



15 | HELMET / CLOTHES HOOK

In the KOTSCHENREUTHER cabin there are several coat hooks for the safe and clean storage of clothing, hats and high-visibility vests.



16 | PHONE HOLDER

Universal mobile phone holder for all mobile phone types and a USB plug for charging.





MAKE THE NIGHT TO THE DAY

SETTINGS FOR MORE PRODUCTIVITY

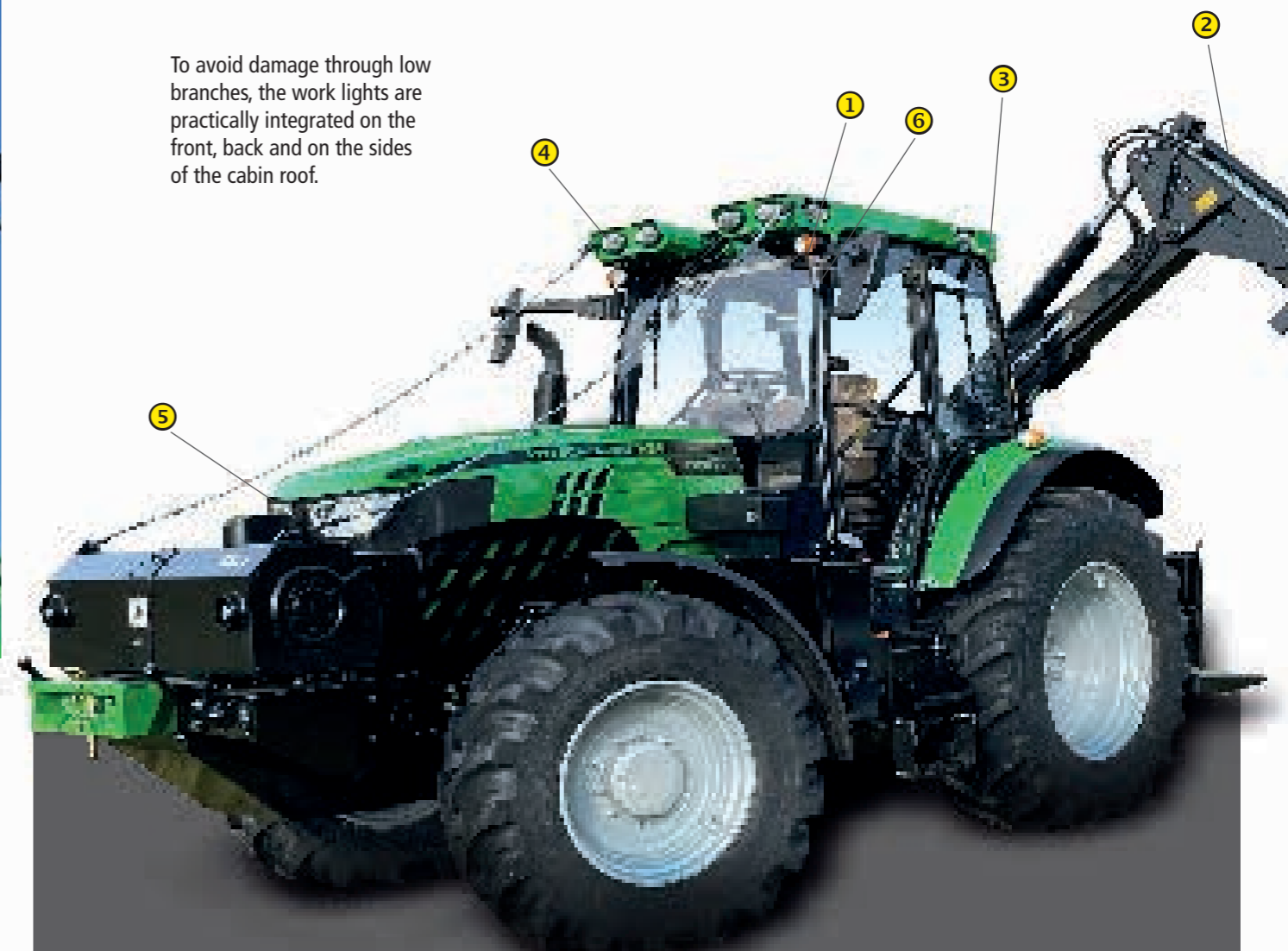
It couldn't be easier: on the display of the Gen 4 Code Gen 4 Command-Center, you can quickly and easily program your headlights for use at night.

Nature is not interested in normal working hours. Stay productive even at night: up to 12 headlights on the cabin ensure all-round visibility.

Working after dark is nothing new to you. But now you can see your workspace in a whole new light. With our factory-installed lighting packages, you also have also at night the perfect view around your KOT-SCHENREUTHER. Our LED lighting packages make the night shift more productive than ever. They use less power, provide brighter, daylight-like light and have a long range.



To avoid damage through low branches, the work lights are practically integrated on the front, back and on the sides of the cabin roof.



1 A-spar
Marker lights & turn signals

3 Rear canopy
Inside: two adjustable work lights
Outside: two work lights
On the side: two work lights

5 Bonnet/front headlights
two low beam headlights
two high beam headlights
two work lights on the outside of the bonnet for spot lighting

2 Crane lights
Two work lights

4 Front canopy
Inside: two adjustable work lights
Outside: two work lights
On the side: two work lights

6 Rotating light bracket

LIGHTS OUT, SPOT ON!

- Up to 12 headlights are integrated into the cabin roof at the front, rear and sides. You are well protected and illuminate the working environment 360°.
- As an option, we offer four more adjustable work lights. These offer additional lighting options.
- Grille mounted work, spot and road lights give you the best light and view from dusk to dawn.
- Optional LED headlights for mounting on the cabin roof (front and rear) and on the A-spar provide all-round illumination in daylight quality.



TAKE THE WHEEL

Nothing easier than this! When it comes to ease of use and functionality, the R-Series is simply unbeatable. The easy-to-understand CommandCenter display, which is optionally available with touchscreen operation, is very easy to use.



The operation is completely designed for performance optimization:

- Direct selection buttons for speed limiter, transmission, engine and PTO settings
- Direct selection keys for all functions
- 4WD capabilities
- Headlight operation
- Error diagnosis

The multifunctional display

The LCD display with backlight is easy to read and designed to use powerful applications:

- Driving automation with standstill control
- Free key assignment
- Proportionally adjustable steering and crane control
- Joystick control for crane and driving device
- Fault diagnosis of the entire machine
- 5 changeable and storable driver profiles



Also check out our YouTube channel!



INTUITIVE USER INTERFACE

Operating the CommandCenter couldn't be any easier. All controls are within easy reach and guarantee you fatigue-free operation of your special forestry tractor.

In addition, the most important applications can now also be controlled via the CommandCenter.

The CommandCenter Display is outstanding with numerous performance features:

- Fully integrated 7-inch widescreen colour display
- Video function (only with touch screen operation)
- Performance monitor
- Access control - password-protected settings
- Diagnostic functions
- Electric transmission control

ERGONOMIC DRIVER INTERFACE

The new joysticks with their reconfigurable buttons make it easy for you to fully exploit the performance potential of the special forestry tractor.



SETTINGS MANAGER

You save valuable time when setting up your machine, since a basic setting (Euro control) is stored, and you can save a further 5 driver-specific settings freely.



The padded armrests are adjustable in height, length, inclination, and width



We offer you a mini steering wheel as an option for the joystick steering



Hydraulic additional control units in armrest easy to use

2-lever joystick control

- control sticks with a sure grip
- simultaneous driving and operating of the crane
- extremely robust joystick

Productive working with the proven operating concept of the 2-lever joystick control. All functions are at hand in the hands of the driver.



Mini lever joystick control

- ergonomically arranged controls
- more sensitive control with mini levers

The shorter lever ensures more sensitive control of the crane functions, which means ergonomic work is also possible for the driver.



Harvester joystick control

- possible control of the harvester head via the control unit
- consistent operation of your machine fleet

The low-set joysticks allow for fantastic ergonomics on the control panel.



RELIABLE

- through thick and thin.



Versatile use is guaranteed.

Also check out our YouTube channel!



HIGH DRIVING COMFORT AND GREAT PERFORMANCE

The TLS™ Plus front axle suspension guarantees not only optimal traction, it also brings up to 10% more power on the ground.

In addition, it ensures greater operating comfort, reduces driver fatigue and increases productivity, while the variable steering ratio on the joystick or in the armrest improves manoeuvrability.



Steering wheel ratio

Variable steering wheel ratio with joystick steering control or mini steering wheel in the armrest.

VARIABLE STEERING RATIO

Increases operator comfort and requires less hand movement and less steering effort when turning in tight spaces. The resulting rotation of the joystick increases hydraulic flow and results in faster tire response.



STRONG BACKBONE FOR STRONG PERFORMANCE

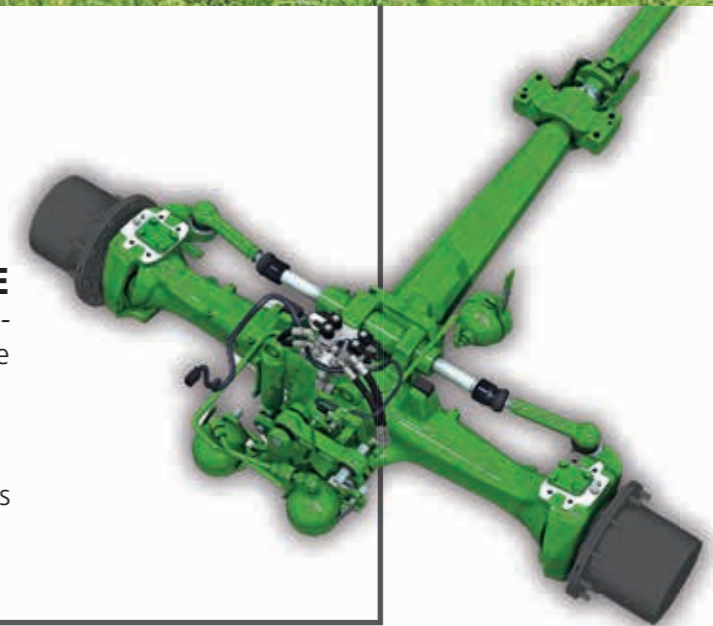
The continuous bridge steel frame is an exclusivity and forms the backbone of our special forestry tractors. This means that our special forestry tractors are up to the toughest jobs. The engine and transmission components are carried by the frame on silent blocks. They are not exposed to unnecessary strains and vibrations are reduced to a minimum.



ADAPTABLE FRONT AXLE

The self-levelling TLS™ Plus automatically adjusts sensitivity and spring rate to compensate for bouncing under heavy pull loads.

The automatic stabilizer also increases stability and reduces swaying during crane work.

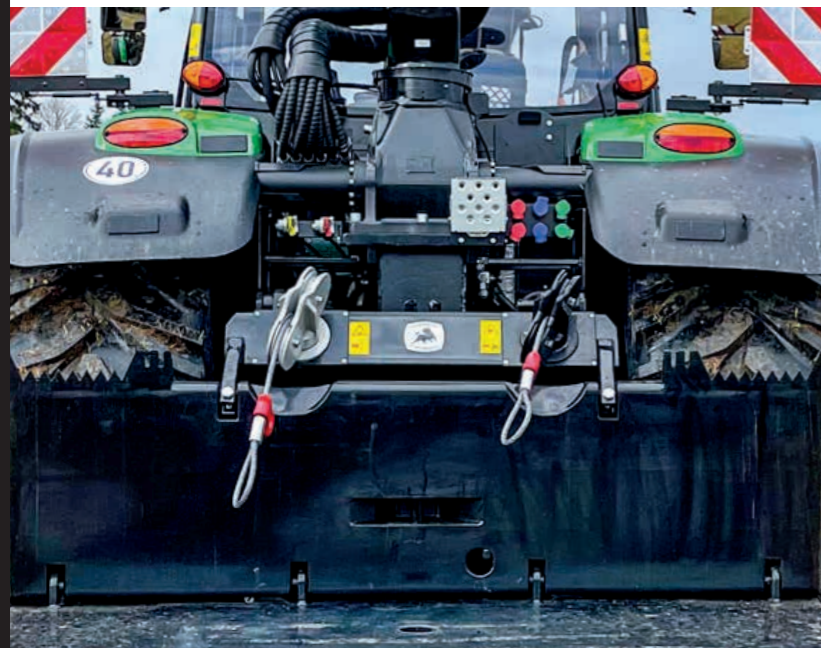


SMARTER HYDRAULICS

Thanks to the pressure and volume controlled closed hydraulic system the special forestry tractor really packs a punch.

HYDRAULIC SUPPLY ATTACHMENTS

Thanks to our large amount of hydraulic oil, the operation of harvester units or mulching heads is possible without any problems. We offer you a variety of hose guides to the crane tip. Let us advise you on your use.



LOTS OF CONTROL UNITS

You get up to six additional electrohydraulic control units in the rear, logically arranged and all iTEC™-capable. The CommandCenter™ lets you view flow rates and times conveniently from the cabin.



HYDRAULIC PUMPS

The hydraulic pump on the K280R Gen.2 and K300R Gen.2 already achieves an impressive flow rate of 160 l/min at 1,500 rpm, leaving no doubt that it is at the top end of the performance spectrum. All other models have a still strong flow rate of 114 l/min or 155 l/min. Our two-circuit hydraulic system with up to 280 l/min is also available as an option.

Also check out our YouTube channel!





KOTSCHENREUTHER FORWARDER CRANES

They have been specially developed as real power packs for the hard use of forwarding work.



Technical data:

Gross lifting capacity	100 KNm
Swing capacity	30 KNm
Reach with gripper	5500 bis 6200 mm
Telescopic pull-in force	30 KN
Crane slewing range	186°

optionally with KOTSCHENREUTHER forwarding grab

Opening width	1500 mm
Gripping surface	0,54 m ²

or CRANAB bucket grab	360	400
Opening width	1820 mm	1980 mm
Gripping surface	0,33 m ²	0,40 m ²

or EPSILON bucket grab	FG 37	FG 43S
Opening width	1570 mm	1880 mm
Gripping surface	0,36 m ²	0,40 m ²

Also check out our YouTube channel!



EPSILON FORWARDER CRANES

Epsilon cranes are proven and powerful forwarding and loading cranes. From a length of 6.80 m to 10.10 m, the right crane is available for every use.



Crane type	M80R			
Arm system	59	68	72	80
Lifting moment gross [kNm]	95			
Max range [m]	5,9	6,8	7,2	8,0
Swing capacity gross [kNm]	31			
Operating pressure [Bar]	200			
Rotator (EPSILON)	G141			

Crane type	M90R			
Arm system	59	68	72	80
Lifting moment gross [kNm]	104			
Max range [m]	5,9	6,8	7,2	8,0
Swing capacity gross [kNm]	35			
Operating pressure [Bar]	220			
Rotator (EPSILON)	G141			

Crane type	S110R				
Arm system	59	68	72	80	96
Lifting moment gross [kNm]	126				
Max range [m]	5,9	6,8	7,2	8,0	9,6
Swing capacity gross [kNm]	40				
Operating pressure [Bar]	205				
Rotator (EPSILON)	G141				

Crane type	S120R				
Arm system	59	68	72	80	96
Lifting moment gross [kNm]	139				
Max range [m]	5,9	6,8	7,2	8,0	9,6
Swing capacity gross [kNm]	44				
Operating pressure [Bar]	225				
Rotator (EPSILON)	G141				

The M80R 68 is produced exclusively by EPSILON for KOTSCHENREUTHER with a low slewing gear and is therefore optimally matched to the new series.



EPSILON forwarder cranes convince...

...especially here due to its low and robust construction and reliability.

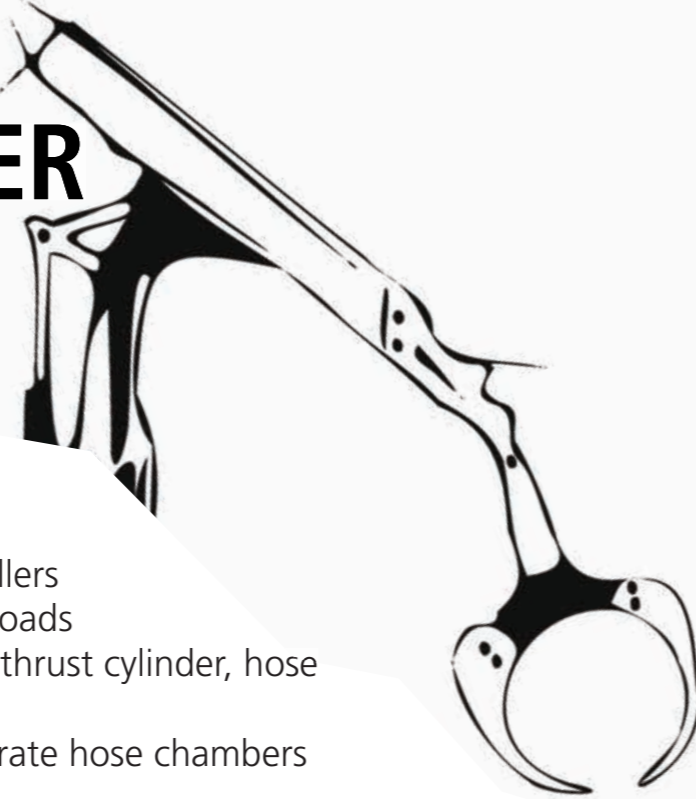
A multitude of different arm lengths gives a perfect geometry on all machines – suitable for individual requirements.

Also check out our YouTube channel!



EPSILON LOADER CRANES

- Extremely low design
- No risk of damage
- No snagging on branches
- Extremely easy hose change
- Maintenance-free, ball-bearing guide rollers
- Chain synchronism control for extreme loads
- Patented double telescopic system with thrust cylinder, hose routing protected and inside
- Specially developed hose quality in separate hose chambers



Crane type	C60F	
Arm system	69	86
Lifting moment gross [kNm]	82	
Max range [m]	6,9	8,6
Swing capacity gross [kNm]	25	
Operating pressure [Bar]	200	
Rotator (EPSILON)	RB06F	



Crane type	M70F			M80F		
Arm system	80	86	101	80	86	101
Lifting moment gross [kNm]	102			114		
Max range [m]	8,0	8,6	10,1	8,0	8,6	10,1
Swing capacity gross [kNm]	31			35		
Operating pressure [Bar]	215			240		
Rotator (EPSILON)	G121					



EPSILON LOADER CRANES

Also check out our YouTube channel!



Epsilon and KOTSCHENREUTHER - a perfect interaction for decades!

To meet your requirements in terms of lifting power, arm geometry, body height and performance, we always install the latest generation of timber cranes on your special forestry tractor.



I CAN SEE WHAT YOU CANNOT SEE!

With a stem dimension (steering wheel centre to front edge) of more than 3.5 m., the road traffic regulations require a signaller at intersections. Alternatively, the legislator allows a certified camera system with an entry in the vehicle documents for solo driving without a guide, which is attached to the left and right. A monitor in the driver's cabin shows the two images simultaneously in a split-screen display, thus eliminating the blind spot.

Crane type	S100F			S110F		
Arm system	80	86	101	80	86	101
Lifting moment gross [kNm]	128			143		
Max range [m]	8,0	8,6	10,1	8,0	8,6	10,1
Swing capacity gross [kNm]	40			44		
Operating pressure [Bar]	215			240		
Rotator (EPSILON)	G141					



RELIABLE
- through thick and thin.



Future
needs
origin.

New technology, proven quality

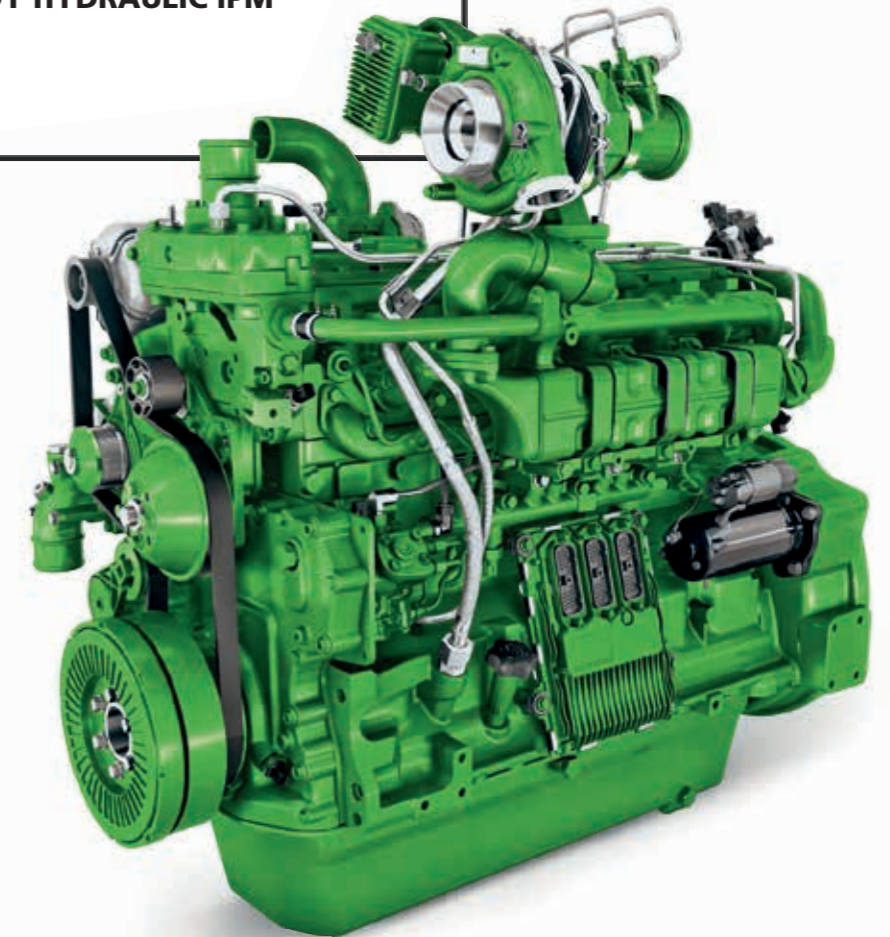




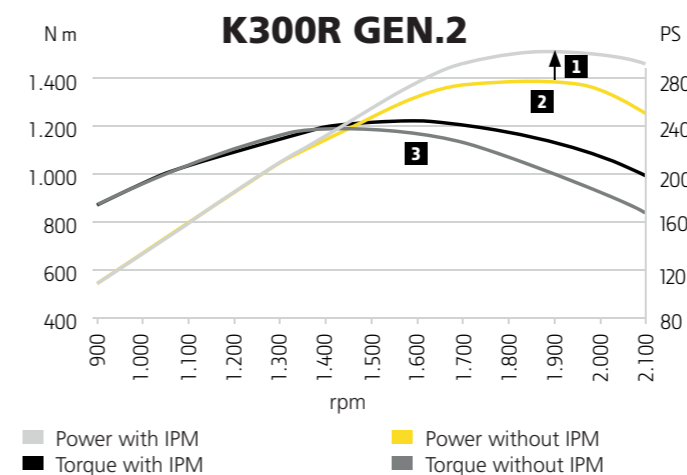
ENGINE

- proven technology

LONG OIL CHANGE INTERVALS FROM 750 HOURS* - ANDY HYDRAULIC IPM



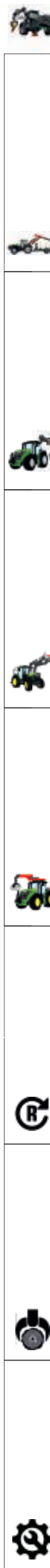
SPECIALLY DEVELOPED FOR FORESTRY

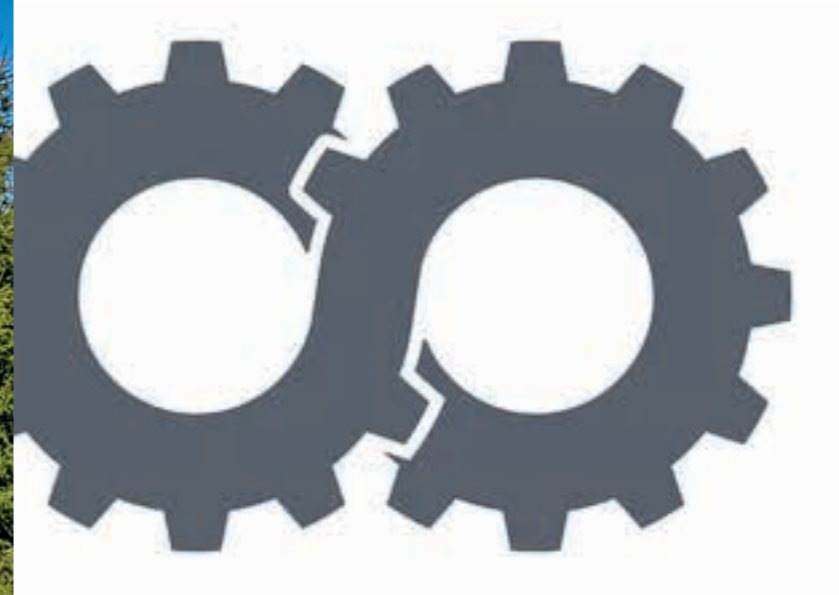


The Intelligent Power Management (1) delivers up to 40 additional horsepower for trans hydraulic and PTO applications. Maximum power (2) and maximum torque (3) are achieved at 1,900 and 1,600 rpm respectively to ensure optimal response and low fuel consumption.

The higher performance of our 6-cylinder engines results from the advanced 4-valve high-pressure common rail technology with an injection pressure of up to 2,500 bar. The PVS engines on the K160R Gen.2 through K260R Gen.2 models feature a variable geometry turbocharger (VGT) that boosts power and efficiency across the entire torque curve.

The PSS. engines (K280R Gen.2 and K300R Gen.2 models) take advantage of two-stage turbocharging. Here, the VGT multiplies the pressure generated by a second turbocharger with a fixed geometry.





AUTOQUAD™ PLUS

All the benefits of PowrQuad™ Plus with the added convenience of automatic shifting and a top speed of 50 km/h. We offer a version with 20 forward and 20 reverse gears for our model. The optional EcoShift function allows high transport speeds of up to 40 km/h at a reduced engine speed of just 1,533 rpm, thus reducing fuel consumption and pollutant emissions.

POWRQUAD™ PLUS AND AUTOQUAD™ PLUS TWO CONTROL VARIANTS

The mechanical manual transmission can be controlled both manually and in the automatic function. In work mode, the transmission can be controlled using the accelerator pedal or the joystick control.



POWRQUAD™ PLUS

We offer a version with 20 forward and 20 reverse gears for our model. They all enable fast shifting with gear adjustment with a smooth group change. Operation is done via a single shift lever with clutch button and power shift buttons. The SoftShift function ensures particularly smooth gear changes, even under load.

Neutral brake with tilt sensor

As soon as you move the direction switch on the left joystick to the neutral position, the machine brakes and stops using the neutral brake. After that, you can use the direction switch to start again, without using the clutch. The braking force is proportionally and automatically adjusted to the terrain conditions by a tilt sensor. This increases driving comfort and safety when working on slopes against rolling backwards.

Also check out our YouTube channel!



AUTOPOWR™

CONTINUOUS SPEED ADJUSTMENT

AutoPowr™ is a hydro-mechanical transmission that delivers stepless and continuous power at speeds between 50 m/h (creeper) and 40/50 km/h.



DRIVING COMFORT

AutoPowr™ maintains the selected speed by automatically adjusting gears to changing load conditions.

FUEL CONSUMPTION

Once the maximum transport speed is reached, the engine speed automatically drops to the lowest level needed to maintain that speed, which in turn reduces noise and fuel consumption.

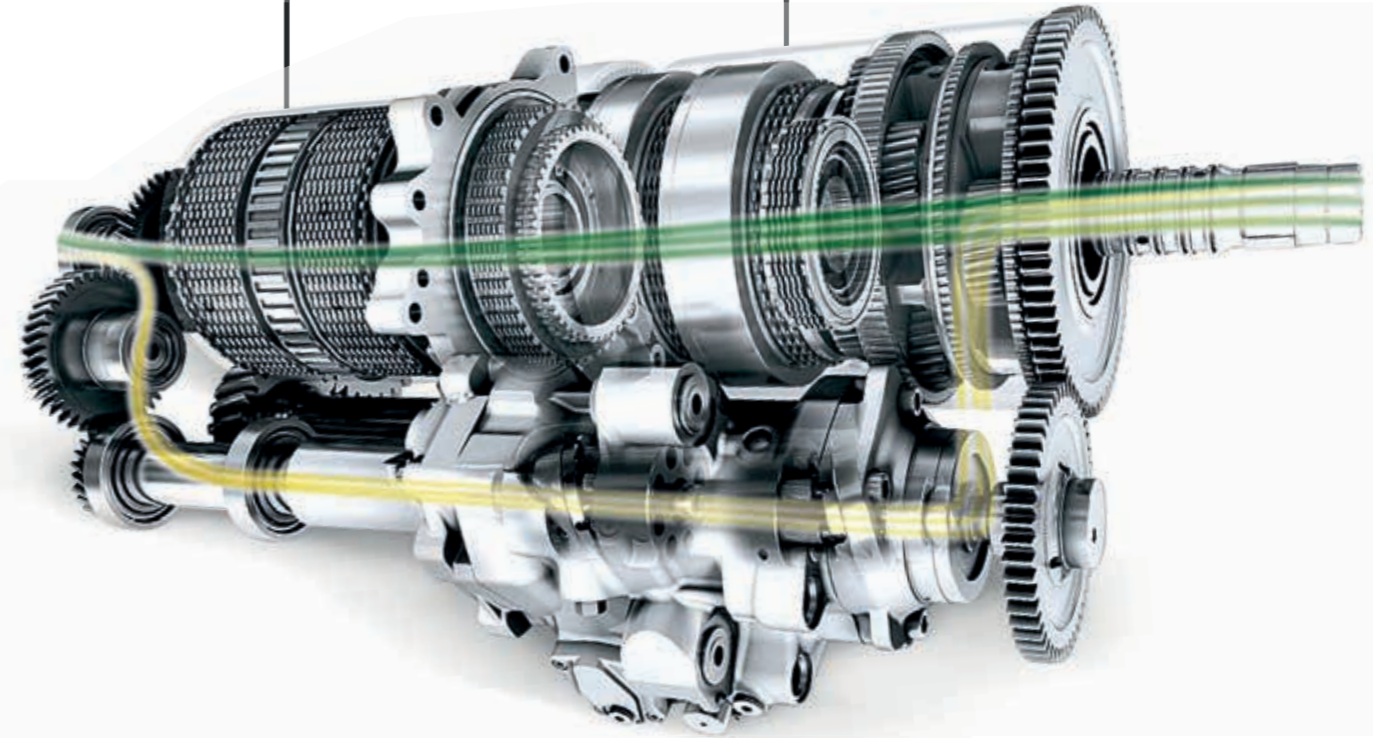
TWO CONTROL VARIANTS

In automatic mode 1, the continuously variable transmission can be replaced by the automatic motor and the transmission management can be driven completely independently.

In driving mode 2, the continuously variable transmission is controlled via the accelerator pedal or the joystick control. In accelerator pedal mode, you accelerate and brake automatically depending on how the accelerator pedal is activated. As soon as you completely release the accelerator pedal, the machine comes to an active standstill.



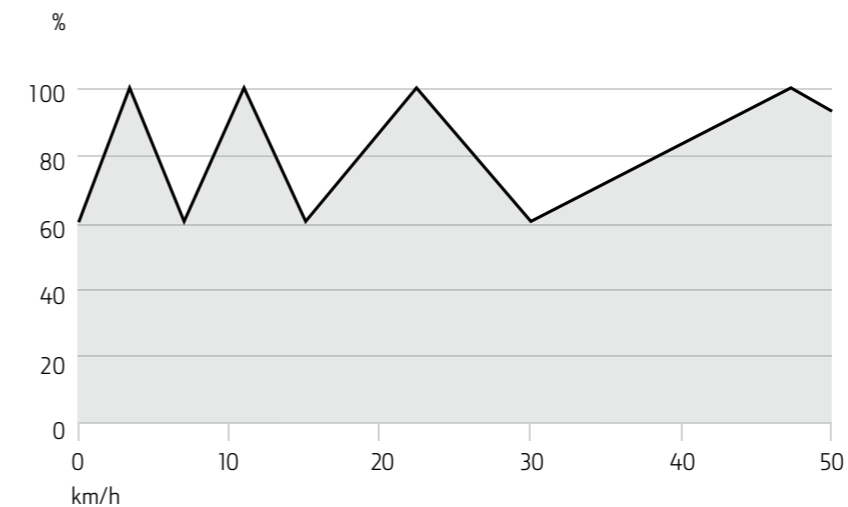
AFTER ALL, MAXIMUM COMFORT ALSO MEANS OUTSTANDING EFFICIENCY.



■ Mechanical performance
■ Hydrostatic performance

Neutral brake with tilt sensor

As soon as you move the direction switch on the left joystick to the neutral position, the machine brakes and stops using the neutral brake. After that, you can use the direction switch to start again without using the clutch. The braking force is proportionally and automatically adjusted to the terrain conditions by a tilt sensor. This increases driving comfort and safety when working on slopes against rolling back.



MAXIMUM EFFICIENCY

AutoPowr™ delivers 100% mechanical power at the following working speeds: 3.5 km/h (heavy transport), 11 km/h (light transport), 22.5 km/h (heavy transport) and 47.2 km/h (light transport). The result is an excellent efficiency that is close to mechanical transmissions. The AutoPowr™ transmission always converts more than 60% of the available power.

STVZO COMPLIANT IN MINUTES!

Thanks to the fenders and mirrors, which can be attached and removed quickly, you can convert from a powerful special forestry tractor to a tractor that is roadworthy in accordance with the StVZO in minutes.



FURTHER MOUNTING OPTIONS THAT MAKE YOU EVEN MORE ECONOMICAL AND ALLOW YOU TO WORK IN ROAD TRAFFIC.

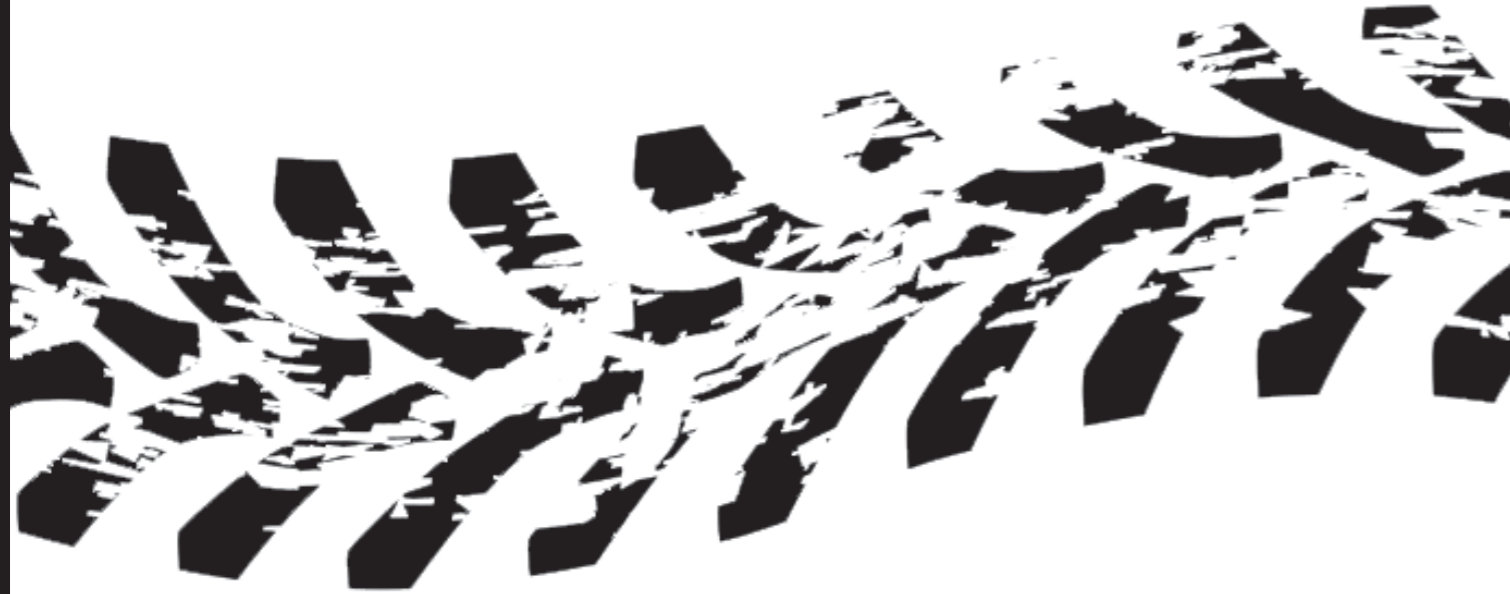
- Mulching head for mowing work
- Auger for road replanting
- Trencher for drainage channel
- Branch and hedge shears
- Quick change with excavator bucket
- Trailer
- Tractor for low loaders
- etc.



60

AVOID GROUND DAMAGE

YOU HAVE THE CHOICE!



The forest is an unforgiving environment if you go in unprepared. You need tires that just work – no matter what nature throws at you. We offer you a large selection for this.

Forestry tires

for demanding tractor applications, efficient cleaning properties, gentle on the terrain, steel-reinforced

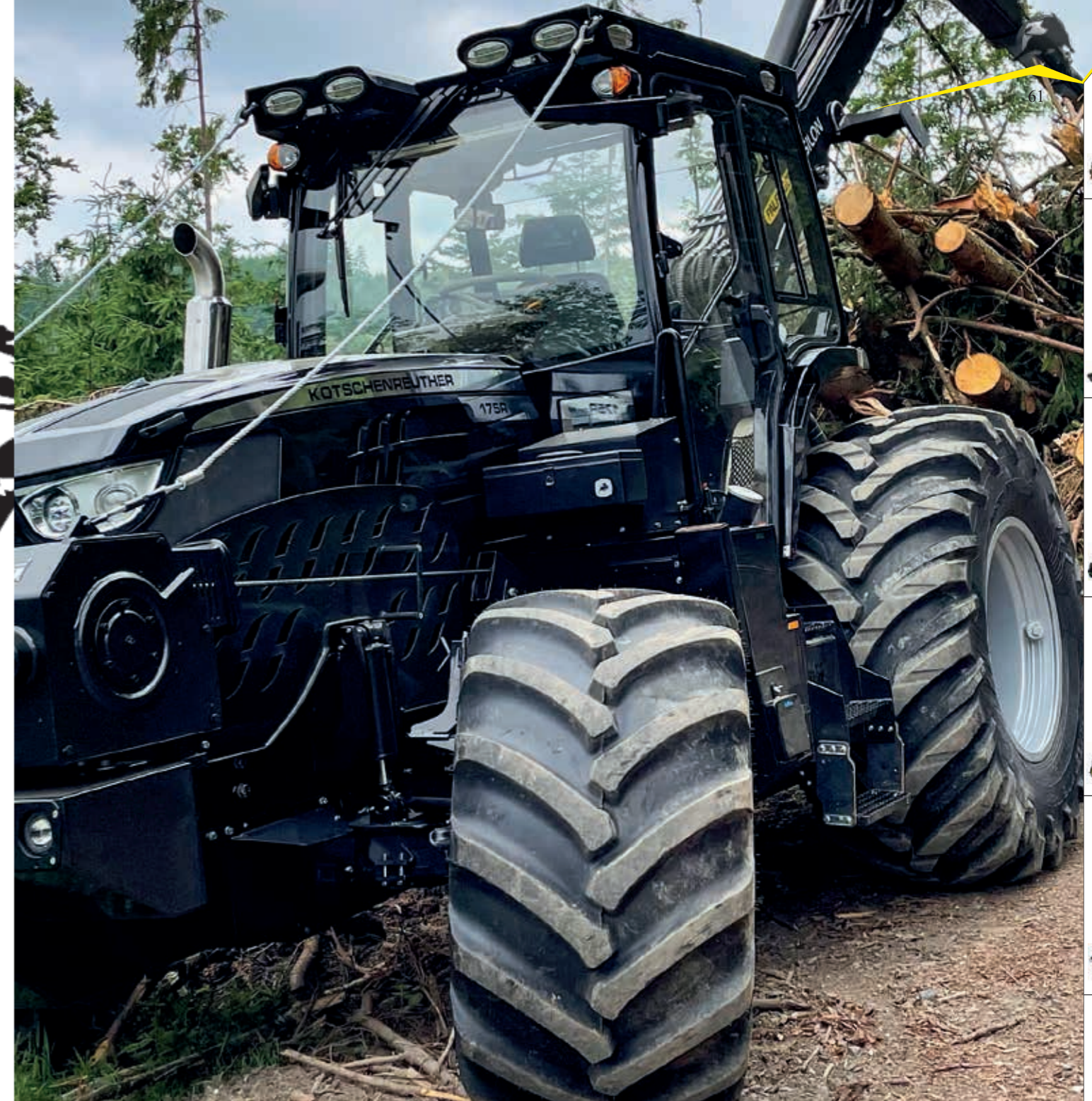
Municipal tires

for frequent road trips

MEDIUM FRAME

ULTIMATE VERSATILITY AND PERFORMANCE

	FRONT AXLE	REAR AXLE
Variant 1	500/65 R28	600/65 R38
Variant 2	540/65 R28	650/65 R38
Variant 3	600/60 R28	650/65 R38
Variant 4	600/60 R28	710/70 R34
Variant 5	710/45 – 26,5	710/70 R34



LARGE FRAME

FULL POWER — AT ANY TIME

	FRONT AXLE	REAR AXLE
Variant 1	600/60 R28	650/65 R38
Variant 2	540/65 R30	650/75 R38
Variant 3	600/65 R28	650/65 R42
Variant 4	600/65 R28	710/70 R38
Variant 5	710/45 – 26,5	710/70 R34

EXTRA LARGE FRAME

FOR EXTRA POWERFUL PERFORMANCE

	FRONT AXLE	REAR AXLE
Variant 1	540/70 R30	650/65 R42
Variant 2	600/70 R30	710/70 R42
Variant 3	710/45 – 26,5	710/70 R34

Also check out our YouTube channel!



62

CONTACT PRESSURE CONTROL

OPTIMAL TERRAIN ADJUSTMENT

ADAPTS TO ANY TERRAIN

On uneven terrain, the control of the contact pressure is supported by swinging lower links of cat. 3. The horizontal height offset is compensated; and you achieve an optimal working pattern, as the height/pendulum compensation are ideally matched to each other.



CONTACT PRESSURE CONTROL

You can easily activate the contact pressure of the rear hydraulics/3-point via the display. Here you specify a value in kg for the forestry tiller to rest on the ground. With changing conditions (moisture), you can increase or decrease the value in the controller and thus ensure an optimal working pattern and protect your drive train. The system automatically compensates terrain contours, height differences or obstacles.



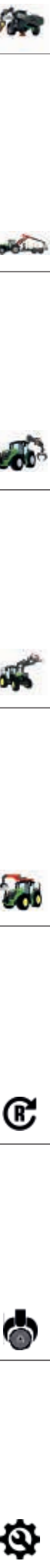
REAR PTO OPTIONS

An electrically switchable rear PTO shaft with 3 speeds (540/540E/1,000 rpm) is part of the basic equipment of all KOTSCHEN-REUTHER forest tractors.

ANTI-STALL ENGINE

Thanks to the proactive contact pressure system, the forestry mulcher is supported by the level compensation to prevent it from sinking in or getting stuck in rootstocks. This feature ensures a protective function of the engine against frequent stalling since the shredder cannot come to a standstill.

- increased engine life
- lower operating costs
- more comfortable working with
- the mulcher/automatic function





Mountain support straight/long version.



AUTOMATIC TRAILER HITCH WITH 38MM BOLT



HITCH WITH BALL COUPLING

Video of the alteration!



KOTSCHENREUTHER - QUICK CHANGE SYSTEM

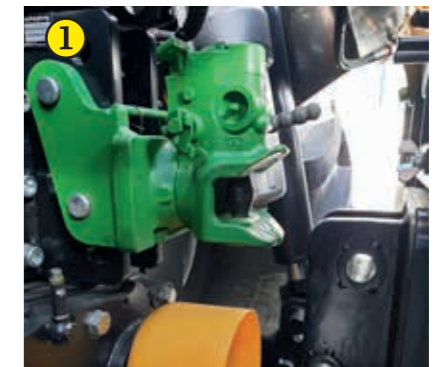
A component of the Kotschenreuther special forestry tractor is a quick-change system, which turns the machine into a universal all-rounder in just a few minutes, such as:

- PTO work
- Mountain support with quick release (thus three-point linkage KAT III)
- Automatic trailer hitch
- Ball head K80 in bottom hitch
- Additional control units
- Two-line air brake system



ROTATING TRAILER HITCH

The optional trailer hitch can be removed from the vehicle console in just a few simple steps, the adapter can be rotated in the rear wall and thus the forwarding shield is ready for use with the trailer hitch. The hitch can be safely stowed away and is therefore always ready to hand.



1 Automatic trailer hitch (38 mm), fastened with two bolts on vehicle console.



2 Rotatable hitch adapter in the back wall - in minutes you can attach your trailer to the back wall.



3 Tow hitch on swivel adapter attached to the rear panel, with StVZO approval.



4 Adapter rotated towards tractor, the smooth back wall is now again fully usable for forwarding work.



LOW FORWARDING SHIELD

With a height of only approx. 40 cm, the trailer hitch and power take-off of the tractor can be used at any time. des Schleppers jederzeit genutzt werden.



STRAIGHT FORWARDING SHIELD

The straight forwarding shield ensures problem-free attachment.



PROTECTION SKINS

Ideal for use with with road safety measures (asphalt protection).



THE KOTSCHENREUTHER SPECIAL FORESTRY TRACTOR CAN BE CONTROLLED COMPLETELY WIRELESSLY ON REQUEST. COMFORT AND PERFORMANCE ARE SIGNIFICANTLY INCREASED DURING ROPEWORK. THE FOLLOWING FUNCTIONS ARE AVAILABLE:

- Loosen/pull cable winch
- Mountain support up/down
- Eco drive with clutch
- Gas +/-
- Right/left steering
- Engine start/stop
- Lowering brake
- Emergency call
- Tractor forward/neutral brake/ backward
- 2-stage winch gear wirelessly switchable



The mountain exit is a useful aid in the difficult terrain



Optional crane wireless control

PERFORMANCE AT THE PRESS OF A BUTTON



With the permanently installed double drum winch (optionally with 8, 10 or 12 tons traction) you are well equipped for the toughest jobs. The winch is also optionally available with a mountain exit at the front. The two drive speeds of the cable winch gears can be switched wirelessly under load when working with ropes. The rope ejection speed can also be adjusted proportionally via the wireless system. The cable winch can be reduced to 6.5 tons traction force and thus can be operated unilaterally.



Also check out our YouTube channel!



WORK

flexibly and protect the floor!

Clamp bench and clamp bench trolley

The advantages at a glance

- More efficient
- Higher traction due to the low traction point
- Gentle on the floor
- High flexibility – whether short or long timber!



Mountain support

Width 2400 mm, other types available as an option
 Lifting height 780 mm
 Lowering depth below floor 290 mm
 Lifting power 80 KN



Clamp bench on mountain support

Opening width 1640 mm
 Gripping area 0.65 m²

- low towing point
- Optional opening of the clamp bench while driving, thus fast unloading of the trunks at the storage site possible.



Clamp bench trolley

Opening width 2027 mm
 Gripping area 1.6 m²
 Bogie axle 500 / 600 / 710 mm
 (Optional with drive)



TECHNICAL DATA

(* >>>> see right page)

MODEL	175M	160R	175R	210R
Wheelbase (mm):	2765	2765	2765	2765
ENGINE:				
MAX. ENGINE POWER (ECE-R120), HP (KW)	172 (126)	160 (117)	171 (125)	182 (133)
MAX. ENGINE POWER WITH IPM (ECE-R120), HP (KW)	-	192 (141)	203 (149)	213 (157)
Constant power range, rpm	2.100 - 1.500			
Torque rise, percent	40			
Maximum torque, Nm (at 1,600 rpm) - without IPM	726	679	726	773
Maximum torque, Nm (at 1,600 rpm) - with IPM	-	773	815	842
Rated speed, rpm	2100			
Design type	John Deere PowerTech™ PVS			
Exhaust aftertreatment	Stage V, Diesel Particulate Filter (DPF), Diesel Oxidation Catalyst (DOC), Selective Catalytic Reduction (SCR) with DEF			
Cylinders/displacement	6 / 6,8 l			
Injection system and regulation	High-pressure CommonRail injection, electronically controlled			
TRANSMISSION:				
POWERQUAD™ PLUS / ECOSHIFT	•	•	•	-
AUTOPOWR™ 0.05 - 40km/h / 0.05 - 50km/h	-	•	•	•
BRAKE:				
	>>>> *			
AXLES:				
Pendulum axle	Pendulum axle			
Front suspension axle (optional)	>>>> *			
Stabilizer	>>>> *			
Travel with TLS™ Plus	>>>> *			
Activation of the front differential lock	>>>> *			
Activation of the rear differential lock	>>>> *			
Rear axle	>>>> *			
FRAME:				
Construction	>>>> *			
HYDRAULIC SYSTEM:				
Design type	Pressure and flow rate-controlled PFC system with load sensing			
Performance at rated speed, standard/optional, l/min	114/213	155/244		
Pressure	200 to 240 bars (depending on crane variant)			
CABIN:				
Tests	Tested forest cabin ROPS/FOPS/OPS and OECD Code 4			
Noise level, dB(A)	66			
Driver's seat	>>>> *			
Glazing	>>>> *			
Roof hatch, side windows	>>>> *			
Terminal:				
Driver profiles	>>>> *			
Work profiles	>>>> *			
Winch drive:				
Transmission	>>>> *			

230R	200M	220M	220R	240R	260R	280R	300R
2765	2800	2800	2800	2800	2800	2900	2900
204 (150)	194 (143)	216 (159)	193 (142)	215 (158)	237 (174)	253 (186)	275 (202)
234 (172)	-	-	223 (164)	244 (180)	259 (190)	281 (206)	301 (222)
2.100 - 1.500							
40							
866	820	914	819	913	1.007	1.077	1.171
941	-	-	899	982	1.025	1.129	1.212
2100							
John Deere PowerTech™ PVS						John Deere PowerTech™ PSS	
Stage V, Diesel Particulate Filter (DPF), Diesel Oxidation Catalyst (DOC), Selective Catalytic Reduction (SCR) with DEF							
6 / 6,8 l							
High-pressure CommonRail injection, electronically controlled							
-	•	•	•	•	•	-	-
•	-	-	•	•	•	•	•
Disc brake running in an oil bath, parking brake, neutral brake for work operation with stepless adjustment of the braking force by recognizing the terrain situation using a tilt sensor							
Pendulum axle				-			
TLSTM Plus front axle suspension - hydropneumatics active three-link system with load-sensing level control						TLSTM Plus - with level control	
Front axle stabilizer, blocking of the front axle for optimum stability, automatic function when standing							
100mm travel							
self-locking differential			Self-locking differential, optional 100% differential			100% differential lock	
Electro-hydraulic with oil-cooled clutch							
Flange axle							
Continuous bridge steel frame with protective mounting of the engine and gearbox							
Pressure and flow rate-controlled PFC system with load sensing							
155/244				160/285			
200 to 240 bars (depending on crane variant)							
Tested forest cabin ROPS/FOPS/OPS and OECD Code 4							
66							
360° rotating driver's seat with flat cabin floor, proportional joystick controls on armrest, gas, clutch, brake on joystick, pedals in the front and rear, all controls can be operated in any position of the seat							
Safety glazing, panoramic rear window made of 12 mm polycarbonate with an optimal view upwards, OPS tested, optional: safety windows made of 20.4 mm FOPS tested roof hatch, sliding window on the left, side window that can be opened on the right							
5 driver profiles that can be saved as user-defined, change the assignment of the operating elements such as joysticks and buttons under the profiles							
Creating and changing work profiles, quick changeover to different work modes (e.g., from forwarding operation to mulching operation)							
Dual clutch transmission with 2 gears = 2 cable winch speeds can be switched under load							



K-COMBI MACHINE

Concentrated power for your success

8x8



CONCENTRATED POWER

for your success

The COMBI MACHINES 8X8 from Kotschenreuther are real all-rounders and ideally prepared for the toughest jobs.

Your benefits at a glance

- Thanks to the KWF certification, the Kotschenreuther COMBI MACHINE, as an 8X8 special forestry tractor, meets all the requirements for participation in public tenders.
- Just one vehicle instead of an entire fleet
- Can be flexibly expanded thanks to 3 full attachment areas
- Special forestry tractor (4X4) and COMBI MACHINE (8X8) in one device
- Highest possible combinations and uses on the market
- Can be converted by one person on site in minutes
- Rear PTO with full power for mulching and chopping
- Power lift suitable for any 3-point device
- Trailer with 25 km/h, optionally with 40 km/h
- High hydraulic performance for additional consumers
- Fast moving on the road



Bogie axle NAF
with hydraulic drive



You can use the trailer thanks to the hydraulic foldable impact grid both with forwarding or loading crane

Fixed and stable pairs of stanchions offer you an extremely high loading volume. The pairs of stanchions can be moved lengthways and can therefore be adapted to all timber lengths.

76 **TWO MACHINES IN ONE**

The COMBI MACHINE 8X8 - 4X4:
50% evolution, 50% revolution –
In short: 100% KOTSCHENREUTHER!



Tailored to your needs

The models are equipped as standard with a PTO shaft and a large hydraulic system to enable you to use them economically all year round.

8X8

Kotschenreuther COMBI MACHINE
for short + energy timber

K-SPECIAL FORESTRY TRACTOR 4X4
for long timber work

ODER



4X4

The KWF-certified 4X4 special forestry tractor sets new standards:
Forest tractors perfectly tailored to your requirements – made by KOTSCHENREUTHER.

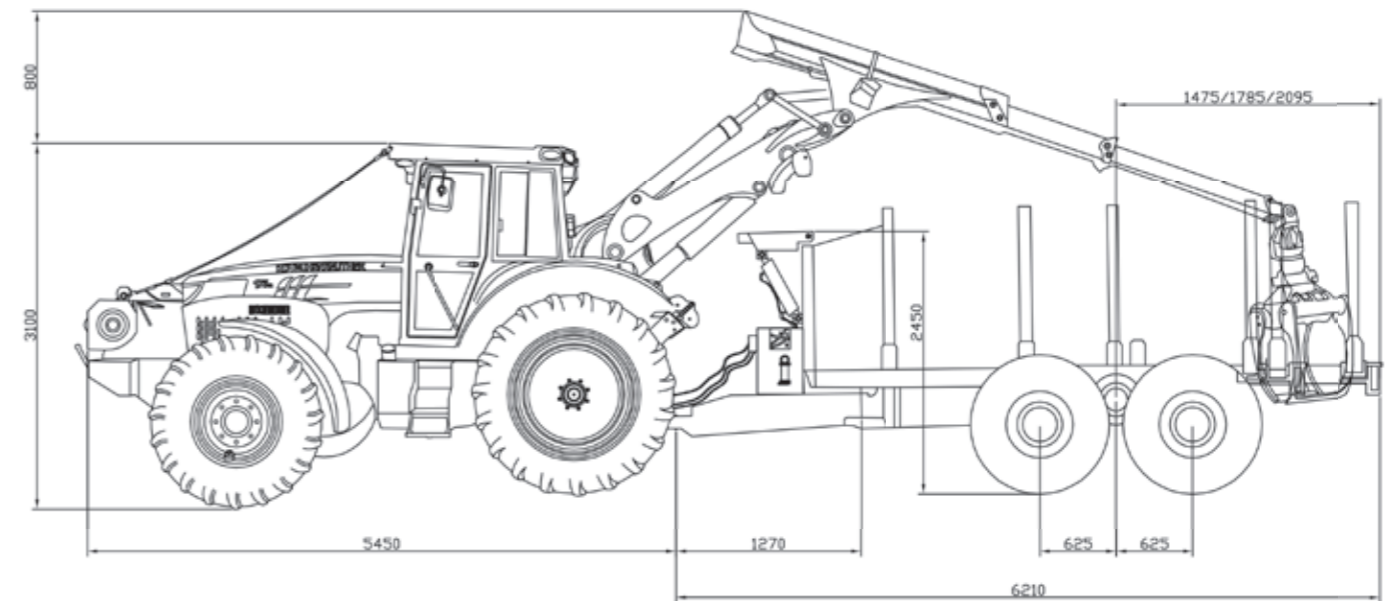
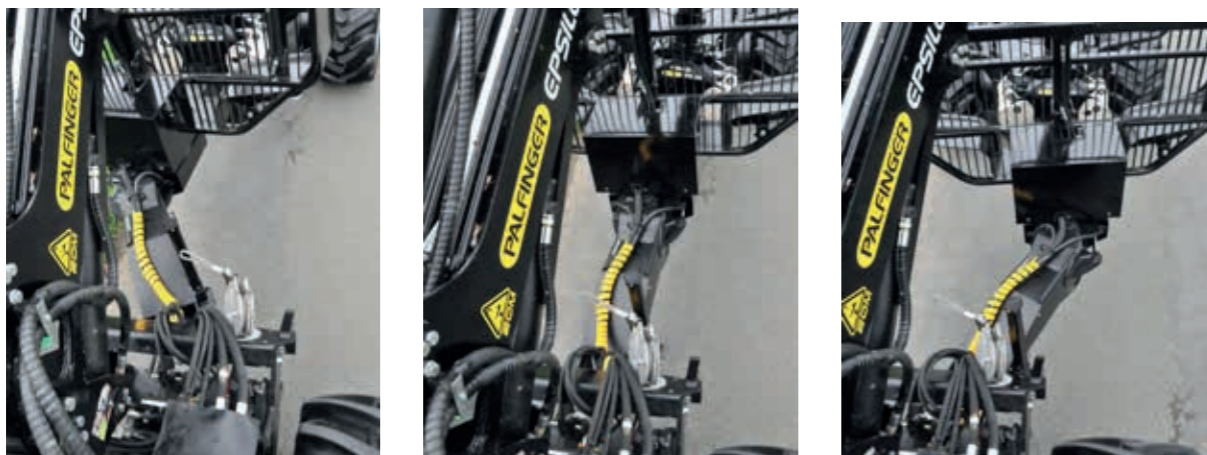




KWF TESTED & CERTIFIED

Thanks to the KWF certification, the Kotschenreuther COMBI MACHINE, as an 8X8 special forestry tractor, meets all the requirements for participation in public tenders.

The hydraulically adjustable steering drawbar enables you tracking characteristics.



ENVIRONMENTAL SUSTAINABILITY

The machine has technical equipment to work soil care:

- Drive: 8-wheel machine combination with stepless drive on all axles and presettable maximum speed
- Cable winch with wirelessly adjustable cable speed and driving ratio

	Trailer	Tractor
Wheel load [kN]	26,8	(HA) 39,4
Tire width nominal [mm]	600 / 710	650 / 710
Tire height/width ratio [%]	50 / 40	65 / 70
Rim diameter [inch]	22,5	38
Tire inflation pressure [100 kPa] or [bar]	2,4	1,6
Profile (soft/traction)	Traction	Traction
Hydrosta. trailer drive up to 7.4 km/h	Bogie axle NAF	Infinitely variable transmission
Tensile force kN	35	112 (Gesamt 147 kN)
Differential locks switchable	Yes	Yes
Steering type	Trail runner	Ackermann steering
Permissible total weight (kg)	15.310	14.800
Load area cross-section m2	3,50	---
Stanchions	3 pieces moveable	---
Drawbar load (kg)	3.000	3.000
Speed (km/h)	25/40 (optional)	40/50
Permission	StVZO	StVZO



FULL ALL-TERRAIN

Also check out our YouTube channel!



FROM 8X8

- to the special forestry tractor

Thanks to the simple uncoupling of the rear carriage, the K-COMBI MACHINE 8X8 is transformed in a very short time into a 4X4 special forestry tractor with hill support, rotatable log trays, a powerful front winch, and a powerful rear crane. The crane can be operated with a harvester module or forwarding grab.

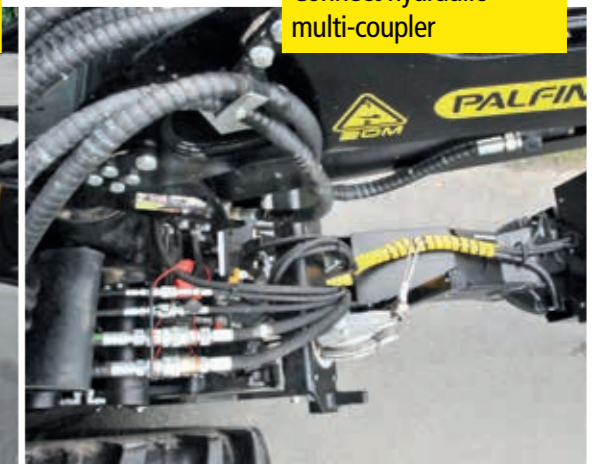
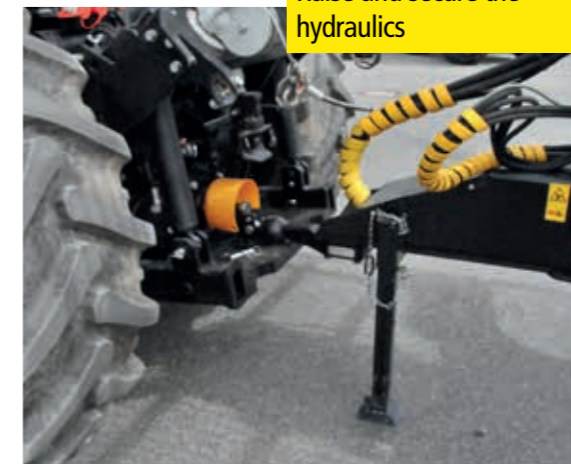
- Can be converted by one person to a 4X4 special forestry tractor in minutes
- The 2-stage winch gear has a maximum pulling force of 2 x 80 kN
- Thanks to the quick-change system, the machine can be turned into a universal all-rounder in just a few minutes, e.g.: grab can be converted with the quick-release fastener (forwarding grab to wood grab), pruning shears, mulching head, woodchipper, levelling blade, PTO shaft work, and much more...

Hang ball head



Raise and secure the hydraulics

Connect hydraulic multi-coupler



COMBI MACHINE 8X8

with limitless versatility

The COMBI MACHINES 8X8 from Kotschenreuther can be used flexibly and are ideal for the toughest jobs.



STVZO COMPLIANT IN MINUTES!

With the R-Series fenders, which can be quickly attached and detached, you can convert from a powerful forestry tractor to a tractor that is road-worthy according to StVZO in minutes. Furthermore, the light bar on the rear carriage can be folded in and out!

BOGIE AXLE

Maximum payload with the greatest possible flexibility. With its movable bogie axle on the central tube frame, work is also possible in the most difficult terrain.



EXTENDABLE FRAME EXTENSION

In addition to the hydraulically operated front grille, a frame extension is available for transporting 2 x 3 m logs.



HYDRAULICALLY FOLDABLE FRONT GRID

The front grid of the rear vehicle can be folded up and down hydraulically. This creates a front grid area of approx. 4 m². Loading and unloading is child's play with the front grid folded down.





THE MULTITALENT
for your needs



ONE MACHINE, ONE DRIVER, countless possible uses

The multitalent from Kotschenreuther can be equipped with a wide variety of attachments and is a "one-man" solution for areas of application relating to municipal services, road maintenance, agricultural and forestry work. It can do everything from mowing grass and trimming hedges to clearing snow, forest and agricultural work up to to care measures with a wide variety of attachments - this all-rounder works at any time of the year and thus makes it superfluous to use expensive numerous special devices.



The multitalents from Kotschenreuther are very versatile carrier vehicles and designed for maximum reliability, driver comfort and easy maintenance. A spacious driver's cabin with a driver's seat that can be rotated 360° and multifunctional controls ensure the most comfortable working conditions on long working days. Thanks to the quick-change devices, work tools can be changed and ensure high performance and an increase in productivity.



Also check out our YouTube channel!



Machine with rear power lever



Front hydraulics and front PTO



Front loader brackets with quick release and multi-coupler





QUICK CHANGE SYSTEM

for versatile use

Thanks to the optional quick-change system, the crane can be dismantled in around 15 minutes.

As soon as the crane is dismantled, the tractor can be used in agriculture with the rear power lever. With a front hydraulic system or attachment plate at the front and front loader brackets, the special forestry tractor can now also do municipal work. The front loader can be attached and removed within minutes and rounds off its use as an all-rounder. Thanks to the reversing device with swivel seat, all equipment at the rear, such as a forwarding trailer, milling machine, woodchipper, etc., can be driven and operated comfortably and safely.



THE MULTITALENT

Forwards and backwards

Switching from forward to reverse travel takes just a few seconds. All you must do is raise the steering column and activate the reverse drive switch and the seat can be rotated 360°. At the rear, the driver finds a second steering wheel or, alternatively, joystick steering with a power shuttle lever and pedals arranged in a similar way to the front. A very large footwell offers enough space, even for tall drivers. The armrest naturally rotates with the seat, so that all important functions can be operated in the same way as when driving forward.



WINCHES

The detachable front winch can be dismantled quickly. This means that your forestry tractor is ready for work with the front loader or the front power lever.



FRONT LOADER

The massive front loader has been designed and conceived for the toughest conditions.



CRANE

The crane can not only be used in forestry, but also for a wide variety of agricultural contract work.



FORWARDING SHIELD

The swivel castors are integrated in the forwarding shield and can be plugged in. You can leave them mounted in the forwarding shield or on the crane console. Thus, you can also use the cable winch without the forwarding shield.



REMOTE CONTROL

External controls on the mudguard for the linkage, PTO shaft and control unit allow you to easily attach your attachments.



FLEXIBLE

With the forwarding shield, which can be quickly detached, you are ready for your next job within a few minutes.



FRONT LOADER CONSOLES

The integrated front loader consoles on the bridge steel frame ensure stability and flexibility.



FRONT HYDRAULICS

The front power lift and the front PTO give you more mounting space.



PROTECTIVE GEAR

Our massive forest protection equipment protects your machine from damage, even in the most extreme terrain.





FORESTRY TRACTORS

with front bolster & rear winch





UVV
Forstschlepper
von KOTSCHENREUTHER

KOTSCHENREUTHER UVV FORESTRY TRACTORS

With our forestry tractors you are in the best position for any job. Thanks to our versatile assembly and extension options you can use different attachments such as mulchers, trailers, winches, hedge trimmers, snowploughs and much more. You get a compact, agile but powerful tractor, which is just waiting for serving your demands.



**VERSATILE -
AND BRILLIANT**

**YOUR BENEFITS
AT A GLANCE:**

- High performance
- Extremely long service life
- Sensitive, simple handling
- High manoeuvrability
- Universally applicable
- Economical work
- High resale value
- Tailor-made equipment according to individual specifications





UVV FORESTRY TRACTOR OF THE M-SERIES

M-SERIES ENGINES

Types:	Cylinder:	Power:	Wheelbase:	Hydraulics	
				SERIES	(optional*)
6090M	4-Zylinder	84 KW / 114 PS	2400 mm	80 l/min	114 l/min
6100M	4-Zylinder	92 KW / 125 PS	2400 mm	80 l/min	114 l/min
6110M	4-Zylinder	99 KW / 135 PS	2400 mm	80 l/min	114 l/min
6120M	4-Zylinder	107 KW / 145 PS	2400 mm	80 l/min	114 l/min

*Stronger hydraulic pump





UVV FORESTRY TRACTOR OF THE R-SERIES



R-SERIES ENGINES

Types:	Cylinder:	Power:	Wheelbase:	Hydraulics	
				SERIES	(optional*)
6R 110	4-Zylinder	99 KW / 135 PS	2580 mm	114 l/min	
6R 120	4-Zylinder	107 KW / 145 PS	2580 mm	114 l/min	
6R 130	4-Zylinder	115 KW / 156 PS	2580 mm	114 l/min	155 l/min

*Stronger hydraulic pump



ONE MACHINE, ONE DRIVER, countless possible uses

Thanks to our quick conversion options, you can transform your forestry tractor into a fully usable universal weapon in just a few minutes. The three-point hydraulic system with PTO shaft and hydraulic connections is available at the rear. You are flexible at the front with a front power lever and front PTO or a municipal mounting plate. And thanks to the front loader with EURO attachment, you are well equipped for loading work. With this all-rounder you not only increase your productivity, you also make your work easier and this even with full driving fun. See for yourself!



FRONT LOADER

You are well equipped in the forest with a lumber shield or grab tongs. Lifting platforms, hedge trimmers, etc. can also be mounted on the EURO mount.

FRONT POWER LEVER

A front power lever can also be fitted to the tractor. This means you have the attachment space to the front.

COMMUNAL PLATE

A communal plate can be mounted in the front. For example, you can attach snowploughs and use them close to the machine.

TRAILER HITCH

In the rear we have installed a fully registered trailer hitch. Thus, you can legally drive trailers on the road.

THREE POINT

Thanks to our three-point hydraulics, you are well prepared for all work. All kinds of attachments can be installed and used here easily and in the shortest possible time.

Video of the tractor

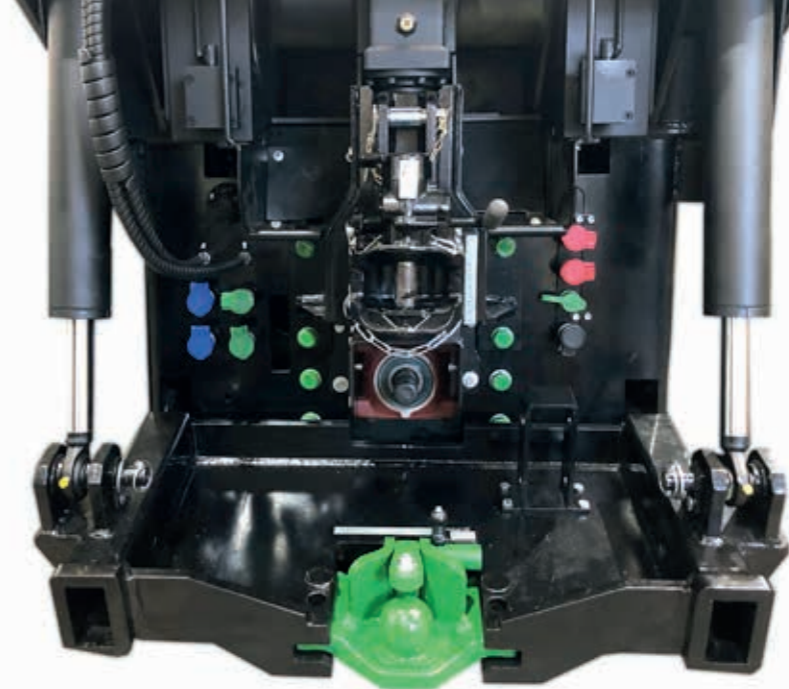




FIXED CONSTRUCTION

With our UVV forestry tractors, everything is about performance, compactness and flexibility. With our 1st variant, the fixed body, we have combined everything in one. With a fixed winch in the rear, we achieve the best possible weight distribution and, in comparison to a three-point winch, we shift the weight far forward. In this way, we achieve a high level of tractive effort and a late rearing up of the tractor. With our mountain support, you are well equipped for forwarding work. Be it when

supporting the tractor, when rumbling or when paving the way. The rear wall is directly behind the wheels, so you can pull the logs as far as possible towards the tractor, which in turn has a positive effect on the load distribution. In addition, raising the tractor is not a problem because we install double-acting cylinders. The mountain support on our forestry tractors can be removed and parked safely within minutes. Then the lower links can be inserted. This means you have the three-point hydraulic system and the rear PTO shaft to attach all types of attachments for three-point applications.



Also check out our
 YouTube channel!



WINCHES

The 8 or 10 to. double drum winch is available with a hydraulic cable ejection that can be adjusted via the wireless system. Optionally, the pulling force can be reduced to 6.5 tons on one side to use weaker ropes.

AUXILIARY WINCH



REMOVABLE MOUNTAIN SUPPORT

The mountain support is quickly removed and placed on support feet. Then the lower links can be inserted.



REAR HYDRAULICS

With our second variant, the original rear hydraulics from John Deere remain. The classic three-point version is available here and you can use all attachments. We also offer the installation of double-acting cylinders. With this you can, for example, press a three-point winch onto the ground during use to improve the stability of the tractor. When pulling the winch sideways, it does not wobble, and the weight of the tractor is optimally used as a counterweight.



Also check out our YouTube channel!

WIRELESS SYSTEM

We offer you various expansion stages of the wireless system for the tractor:

1. Gas +/-
2. Engine Start & Stop
3. Wireless driving



CONSTANT TENSION WINCH

We also offer you an optional three-point winch as a constant-pull cable winch.



DOUBLE-ACTING REAR POWER LEVER

The switchable cylinders can be switched over to double-acting to actively push with the hoist. The EHR can still be used in agriculture.



PROTECTIVE GEAR for forestry

For the safety of the driver and to protect the forestry tractor, KOTSCHENREUTHER offers complete protective equipment. When it comes to forest protection, it is extremely important that the John Deere forestry tractor is robust and stable against damage during work. However, all points are easily accessible and reachable for maintenance work. The ground protection frame hardly affects the ground clearance of the forestry tractor and even offers advantages when driving over wood thanks to its almost flat surface.



ENGINE PROTECTION

Our bonnet protection shields the engine and its ancillaries perfectly.



BRANCH DEFLECTOR

With the branch deflector, we effectively protect the cabin and the work lights. Branches and undergrowth are simply guided over the cabin.



DETACHABLE FENDER

You can remove the fenders at the front and rear in one to two minutes. This means that they are not damaged in the forest under the most extreme conditions and remain suitable for use on the road.



UNDERBODY PROTECTION

Driving on heavily soiled trails is no problem with the engine and transmission protection pan. Thanks to the underbody protection, protruding branches cannot damage important components of the tractor. Thanks to our all-steel fuel tank, you don't have to worry about damaging the tank and losing fuel as a result.

Also check out our YouTube channel!



PROTECTIVE SCREEN

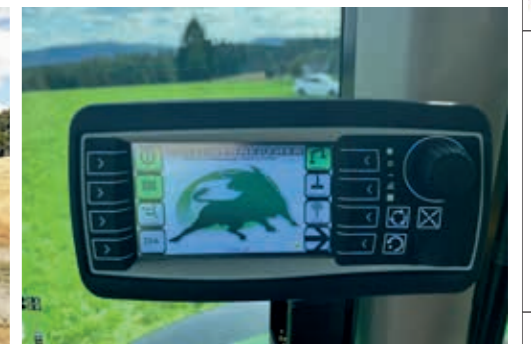
KOTSCHENREUTHER polycarbonate rear window, extreme impact resistance, ECE-R 43 approval for John Deere cabins



Also check out our YouTube channel!



All attachments are clearly visible and easy to operate from the cabin.



LOGGING

made easy with a winch:

The harvesting of trees increasingly requires the use of cable winches as a logging aid. In the near-naturally managed forest, the wood harvest represents a particular challenge. Strong trees with large, heavy crowns should be logged carefully and in a targeted manner. Conventional logging is completely ruled out in individual cases due to the existing risks from dry branches and dead wood. The use of the cable winch is also usually indispensable for logging work along traffic routes, settlements, and bodies of water.



UVV forestry tractor logging problem trees on federal roads



Secure stand thanks to mountain support



Easy work with rope ejection



The Kotschenreuther front bolster swing arm is characterized by:

- Close to the tractor, tight turning circle
- Enormous lifting power
- High stability



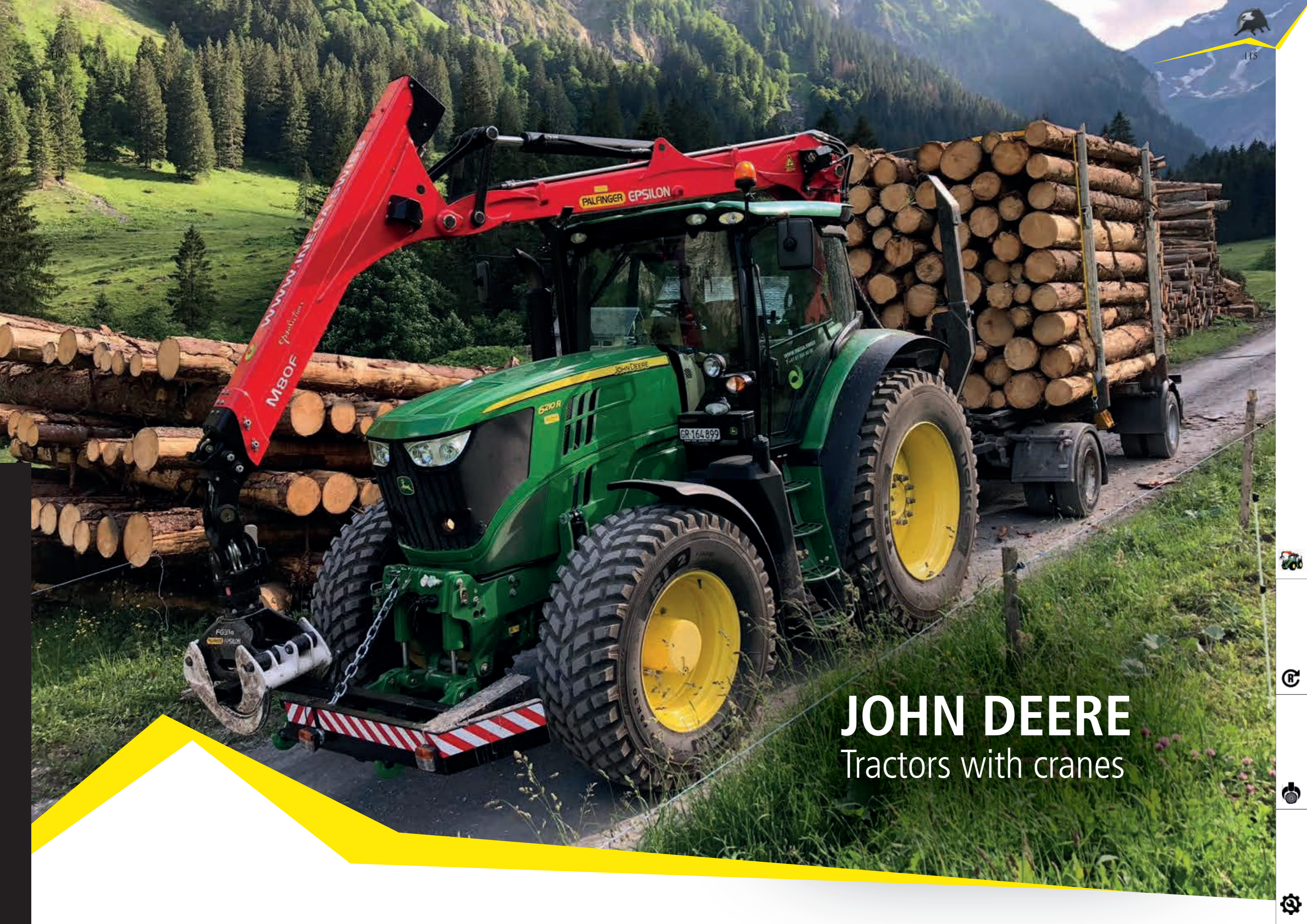


MODEL
Wheelbase (mm):
ENGINE:
MAX. ENGINE POWER (ECE-R120), HP (KW)
MAX. ENGINE POWER WITH IPM (ECE-R120), HP (KW)
Constant power range, rpm
Torque rise, percent
Maximum torque, Nm (at 1,600 rpm) - without IPM
Rated speed, rpm
Manufacturer
Design type
Exhaust aftertreatment
Cylinders/displacement
Injection system and regulation
TRANSMISSION:
POWERQUAD™ PLUS
AUTOPOWR™ PLUS ECOSHIFT
AUTOPOWR™
0,05 - 40 km/h
0,05 - 50 km/h
AXLES:
Pendulum axle
Front suspension axle (optional)
Travel with TLS™ Plus
Activation of the front differential lock
Activation of the rear differential lock
Rear axle
FRAME:
Construction
HYDRAULIC SYSTEM:
Design type
Performance at rated speed, standard/optional, l/min
CABIN:
Technical data
Noise level, dB(A)
Cabin window surface, m²



6090M	6100M	6110M	6120M	6R110	6R120	6R130
2400	2400	2400	2400	2580	2580	2580
100 (73)	111 (81)	122 (90)	133 (98)	121 (89)	132 (97)	143 (105)
114 (84)	125 (92)	135 (99)	145 (107)	135 (99)	145 (107)	156 (115)
2.100 - 1.500						
40						
421	468	515	562	515	562	609
2100						
John Deere Power Systems						
PowerTech™ EWL				PowerTech™ PSS		
Stage V, Diesel Oxidation Catalyst (DOC) and Selective Catalytic Reduction (SCR) with DEF						
4 / 4,5 l						
High-pressure CommonRail injection						
•	•	•	•	•	•	•
•	•	•	•	•	•	•
•	•	•	•	•	•	•
•	•	•	•	•	•	•
-	-	-	-	•	•	•
Pendulum axle						
TLS™ Plus front axle suspension - hydropneumatics active three-link system with level control						
100mm travel						
self-locking differential						
Electro-hydraulic with oil-cooled clutch						
Flange axle						
Continuous bridge steel frame with protective mounting of the engine and gearbox						
Pressure-controlled system (PC)/pressure and flow rate-controlled PFC system with load sensing				Pressure and flow rate-controlled PFC system with load sensing		
80/114				114		114/155
310° all-round view; two doors on B-pillars, steering column/steering wheel adjustable in height and inclination				ComfortView™ cab with 2 panoramic doors or B-pillar version on the left side and generation		
70				71		
4,85				6,11		





JOHN DEERE

Tractors with cranes



WE BUILD TRACTORS ACCORDING TO YOUR WISHES!

Anyone interested in buying a John Deere forestry tractor from Kotschenreuther with a loading or forwarding crane and front winch, can choose between the John Deere 6, 7 and 8 series. It doesn't matter whether you are a contractor or a forester - you need solutions for your requirements. This is exactly what John Deere forestry tractors from Kotschenreuther are tailored to. Our trained consultants help you with words and deeds.



THE CRANE IS OPERATED VIA JOYSTICK CONTROL.

To create ideal working conditions, we install a driver's seat that can be rotated by up to 220° and extend the foot space in the rear.





CRANE BODY

on John Deere 6 Series tractors

We can mount cranes on all 6 series tractors. These are controlled by proportional joystick controls.

In addition, the installation of a reversing device is not a problem. You get an all-rounder that you can use in forestry, agriculture and municipally. Not only a grab can be attached to the crane, but also logging grabs, hedge trimmers, mulching heads, harvester heads, excavator shovels and other attachments.

CRANE QUICK CHANGE SYSTEM

Thanks to the optional quick-change system, the crane can be dismantled in around 15 minutes. As soon as the crane is dismantled, the tractor can be used in agriculture with the rear power lever.

The crane can be attached and dismantled within minutes and now completes its use as an all-rounder. Thanks to the reversing device with swivel seat, all devices in the rear such as trailers, tillers, woodchippers, etc. can be driven and operated comfortably and safely.



Also check out our YouTube channel!



CRANE BODIES

on John Deere 7 & 8 Series tractors

Installing a crane on the 7 & 8 series is also not a problem for us. Even the largest loading cranes for tractors can be set up here. The crane quick-change system is also available for the 7 & 8 series, so you can adapt your tractor perfectly for the next job in the shortest possible time.



Also check out our YouTube channel!



Chipper loading with loading crane

To feed large processing machines for biomass production, you need an exemplary tractor in terms of performance, driving comfort and operating comfort. A John Deere high-horsepower tractor from the 7 or 8 Series provides the power. With this you will be even more effective and productive in the future, as John Deere tractors are known for being able to transfer high power to the PTO shaft. We ensure driving and operating comfort with our conversions. With the swivel seat and the increased foot space in the cabin, operating the machine is child's play. Thus, you get the perfect tow tractor for long working days and nights when you are fit and productive!





JOHN DEERE FORESTRY TRACTOR WITH CRANE BODY

Various crane variants are available to you. Whether loading crane or reverse crane, we have the right one for your requirements. With the Adler double drum winch, which can lift to 10 to., you have enough pulling power ready at the touch of a button. Thanks to our forest protection equipment, your tractor is well equipped for forest work. We also install a reversing device and a driver's seat that can be rotated by 220°. This allows you to comfortably work backwards without having to constantly turn around. A driving wireless system can also be installed. This allows you to easily move the machine from the outside when roping, without having to get in.



WITH THIS CRANE TRACTOR YOU ARE WELL PREPARED FOR THE HARD WORK IN THE FOREST. WITH THE CRANE AND THE WINCH, YOU CAN WORK COMPACTLY AND WITH HIGH-PERFORMANCE. IN THIS MACHINE EVERYTHING COMES TOGETHER AND IT IS JUST WAITING FOR YOU TO CHALLENGE IT.



YOUR ADVANTAGES AT A GLANCE:

- Complete forest protection equipment
- Adler double drum front winch 8 to. or 10 to.
- Wireless system individually selectable
- Mountain support with rear wall
- Cabin protection
- Cabin with swivel seat
- Reversing device



Foot space of a 6R cabin that is second to none

Also check out our YouTube channel!





KOTSCHENREUTHER

Reversing device



KOTSCHENREUTHER

Reversing device

That's not just convenience - that's user-friendliness of the superlative. Kotschenreuther manufactures reversing devices for the John Deere Series 6M, 6R, 7R, 8R as well as for the 9R Series.



Reversing devices from Kotschenreuther not only impress with their elegance, but much more with the rotation's simplicity – the driver can comfortably rotate with the seat – and also the generous amount of space. There are no restrictions for the driver when driving forwards or backwards.

The versions for John Deere 6M and 6R are available for both PowrQuad Plus and for AutoQuad Plus, Eco Shift, AutoPowr and Direct Drive transmissions. Also possible with active Command steering on 7R, 8R and 9R Series.



6M

6R

7R

8R

9R



WHAT ADVANTAGES DO YOU HAVE?

- Outstanding overview
- Quick change of seat position from forward to backward without having to get up
- Comfortable sitting thanks to large foot space
- Less back and neck pain
- Precise control of the machine
- Many other conversion options for the tractor from our company



REVERSING DEVICES

for 6M Series

Thanks to the ergonomic reversing device, the limitless performance of John Deere tractors can be used in even more ways for farmers with mower combinations or silo spreaders, forestry operations with woodchippers or forestry mulchers, construction companies using compactors and milling machines. This creates a multifunctional self-propelled machine that can replace expensive special equipment.



WE OFFER YOU THE FOLLOWING INSTALLATION POSSIBILITIES!

- Steering wheel in the rear or optionally with joystick steering
- Accelerator, clutch, and brake pedals in the rear
- Seat rotatable by 180°
- Rear footwell
- Reversing lever integrated in the rear
- TÜV entry

Also check out our YouTube channel!



ALTERNATIVELY, ONLY WITH SWIVEL SEAT AND FOOTWELL EXTENSION AVAILABLE





REVERSING DEVICES

for 6R series



WE OFFER YOU THE FOLLOWING INSTALLATION POSSIBILITIES!

- Steering wheel in the rear or optionally with joystick steering
- Brake pedal (inch pedal with clutch and brake function) integrated in the rear
- Foot accelerator pedal
- Seat can be rotated 180°
- Footwell in the rear
- CommandARM rotates together with the seat
- Reversing lever integrated in the rear
- TÜV entry

Also check out our YouTube channel!





WE OFFER YOU THE FOLLOWING INSTALLATION POSSIBILITIES!

- Steering wheel in the rear or optionally with joystick steering
- Brake pedal (inch pedal with clutch and brake function) integrated in the rear
- Foot accelerator
- Seat rotatable by 180°
- Rear footwell
- CommandARM rotates together with the seat
- Reversing lever integrated in the rear
- TÜV entry

Also check out our YouTube channel!



REVERSING DEVICES for 7R and 8R Series

Reversing devices from Kotschenreuther do not only impress with their elegance, but also with the ease of turning - the driver can easily turn the seat - and with the generous amount of space. There are no restrictions for the driver when driving forwards or backwards. That's not just convenience - that's user-friendliness of the superlative.



ATTACHMENTS AND MORE...





ATTACHMENTS to forestry tractors

ROAD LEVELLING BLADE WOODCHIPPER

With the hydraulically adjustable levelling blade you create a clean roof profile on your way. Regular care and passaging save high renovation costs. The KOTSCHENREUTHER forestry tractor is the ideal tractor for this.

In addition to the use with trailer woodchippers, the three-point hydraulic system also allows attachment chippers, making the forestry tractor including the chipper compact and manoeuvrable in the forest.

Also check out our YouTube channel!



TRAILER

With a trailer, you become a flexible service provider. Expand your field of application from forwarding wood in the forest to transport over longer distances.



CABLE CRANE

A cable crane can be attached to the three-point hitch of the Kotschenreuther special forestry tractor. With the help of the crane, the wood can not only be pulled in, but processed straight away. A harvester head can also be used in combination.



SNOWPLOW

With a snowplough in the front, you can use your forestry tractor in winter. With the help of snow chains, nothing stands in the way of clearing forest roads or country roads.



The KOTSCHENREUTHER forestry tractor is ideal as a power source for the forest mulcher.

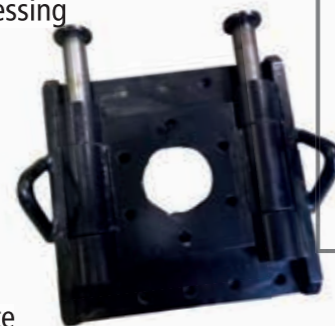


INNOVATIVE IDEAS

From the practice for the practice

For Kotschenreuther special forestry tractors exists a variety of crane attachments which turn the machine into a universally usable all-crane rounder in just a few minutes. These crane attachments offer an unlimited versatility in daily use, such as:

- Productivity with processor head
- Splitting tongs for residual wood processing
- Auger
- Trencher for drainage channel
- Quick change with excavator bucket
- Mulching head for mowing work
- Branch and hedge shears
- Quick-change grab
- Holp quick change system
- KOTSCHENREUTHER quick release plate



KOTSCHENREUTHER Quick-change plate

Optionally we offer you next to the Kotschenreuther quick-change plate, two further variants of the grab quick-change: changing system with two clamping screws detachable and plug-in couplings for hydraulic lines grab, approx. 5 minutes set-up time

Quick-change system with clamping system and integrated coupling system for hydraulic lines grab, approx. 2 minutes set-up time



Also check out our YouTube channel!

KINEMATICS WITH MOVEMENT IN 3 AXES

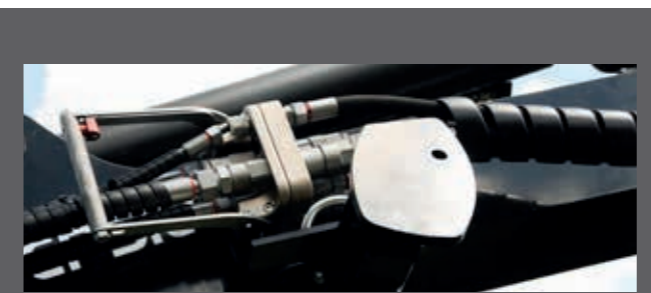
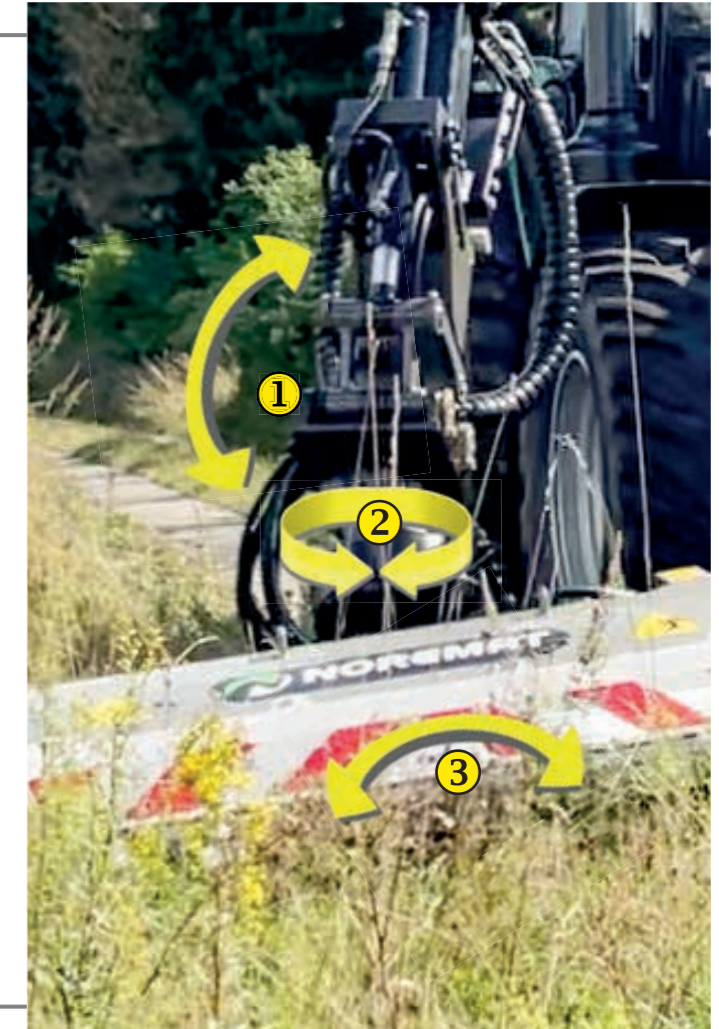
With our kinematics, which offers adjustment options in 3 axes, you can carry out your work even more precisely and comfortably. This allows you to use a wide variety of attachments 360° around the machine and adapt them to the terrain. On the crane, for example, you can use a mulching head in front of the tractor on the right or left side to mulch the roadside there.

This requires normal kinematics at the tip of the crane, which adjusts the mulching head horizontally to the ground (1st axis ①).

Then comes a rotary motor which turns the mulching head, for example, straight ahead in the direction of travel (2nd axis ②).

Finally, we install a swivel engine, which adjusts the mulching head vertically to the terrain (3rd axis ③).

This allows you to simply work forward without having to constantly turn and look around. Of course, the system can also be used with other attachments such as pruning shears, etc.



Multi-coupler, for a quick and clean separation of the supply hoses. The dismantling of the hose system for the conversion from the harvester head to the grab only takes about 10-15 minutes.



Large selection of measuring and control devices for the harvester head



Holp Kranfix: Robust quick-change system for changing work tools within 3 minutes



Kotschenreuther "Shoe" changing system for crane tip, hydraulically adjustable kinematics for attachment of e.g. pruning shears.

PRODUCTIVITY with processor heads

The models are fast, manoeuvrable harvester aggregates for thinning and final logging of small trees.

These light but solidly built harvester units have exceptionally high feed and cutting capacity for their size class. The delimiting knives do a good job making log shifting and loading easier. Colour marking, automatic chain tensioning and pole treatment are available as accessories. The aggregates can also be equipped with a collection unit for efficient logging of energy wood.



Woodykopf in action



Assembly hose package



EDGE MULCHER

If necessary, the brush cutter head or grass cutter head can be removed in a very short time using the Holp Kranfix system, so that the fully-fledged boom crane is available for other attachments.

BRANCH AND HEDGE SHEARS

The pruning and hedge trimmers consist of a coarse-toothed fixed blade and a movable blade, which is driven by a hydraulic cylinder.

EXCAVATOR BUCKET

Clean and thorough cleaning of the water passages is guaranteed with the bowl bucket. Your special forestry tractor is the ideal machine for this because a trailer can be towed.

GRAB

Logging grabs can help you in a wide variety of situations. From logging problematic trees to removing undergrowth, you can use it to do all contract work.

HOLP VARIO BUCKET

Maintaining paths and roads is an important part of forestry work. The ditch for drainage can be recreated with the Vario bucket.



RAKE





KOTSCHENREUTHER

SERVICE OFFER



WE UNDERSTAND SERVICE

as a tool to your goal

To maximize your productivity, your machines need to be in optimal condition 24/7. With our first-class customer, maintenance, and repair service, we ensure that you achieve this goal.



Whether regular maintenance or roadside assistance: we have the necessary facilities, equipment, and expertise to keep your special forestry tractor in top condition. Most maintenance and repair work is carried out on site by our mobile workshop service. Your benefit: faults are rectified promptly and efficiently by our customer service staff.

Our factory-trained service technicians know every bolt and cable on your special forestry tractor and provide you with a level of customer service that's recognized as the best in the country. Added to this is the professional support of our customer service experts, who assist you around the clock with the latest technical solutions and remote diagnostic tools.



REMOTE ASSISTANCE FOR YOUR K-SPECIAL FORESTRY TRACTOR

Thanks to our innovative remote access function, we can "take a seat" next to you in the cabin to provide you with optimal real-time support with calibrations or error analyses of your KOTSCHENREUTHER special forestry tractor.

Also check out our YouTube channel!



- ➔ Remote calibrations
- ➔ Optimization of crane control
- ➔ Software updates
- ➔ Implementation of error analysis

LOCAL SERVICE

- ➔ Top equipped workshop buses
- ➔ Trained technicians
- ➔ Europe-wide service

We remain at your side, no matter where!



CRANE AND WINCH TEST

With our mobile test bench at your site! To meet the legal requirements for crane and cable winches, we offer on-site testing as a service.



THE ENTIRE LIFE CYCLE AT A GLANCE

LIFE CYCLE SOLUTIONS FROM KOTSCHENREUTHER

We combine outstanding products with outstanding lifecycle experience to ensure unsurpassed performance, maximum uptime and lowest cost of ownership over the entire lifecycle of your machine.



PLANNING AHEAD

- Planning ahead and production design functions:
- Proactive reminder of due maintenance
- Up to 8 years/ 8,000 hours carefreeness with PowerGard™ Protection
- Expert check



FORESEE

- Identify potential problems and replace parts before they fail:
- Proactive remote machine diagnostics



CORRECT

- Fastest possible resolution of problems:
- Service Advisor™ Remote
- Remote display access
- Factory support and spare parts delivery



GEAR UP

- Stay up to date:
- Performance
- driving comfort
- Operational security
- Reliability
- Increase in value



A PowerGard™ contract protects your equipment and gives your machines the uptime and sustained peak performance your business needs.

A PowerGard™ contract covers the engine, transmission, and axles.

UP TO 8 YEARS / 8,000 OPERATING HOURS**





FOLLOW US ON



Neufang 153 | D - 96349 Steinwiesen

Telephone +49(0)92 60/96 30 64-0

Fax +49(0)92 60/96 30 64-40

info@kotschenreuther.eu

www.kotschenreuther.eu

Specifications, descriptions, data, texts, information and images correspond to the current status at the time of printing but can be changed at any time and without prior notice. Illustrations may show customer-specific and country-specific special equipment as well as non-complete standard equipment. Dimensions, loads and technical data are non-binding.